



OPEL

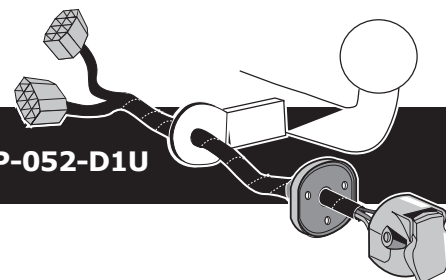
Meriva B 04/2010-
Zafira Tourer 2011-
Mokka 2013-
Mokka X 09/2016-
Cascada 2013-

SAAB

9-5 06/2010-

CHEVROLET

Orlando J309 02/2011-
Trax 2013-

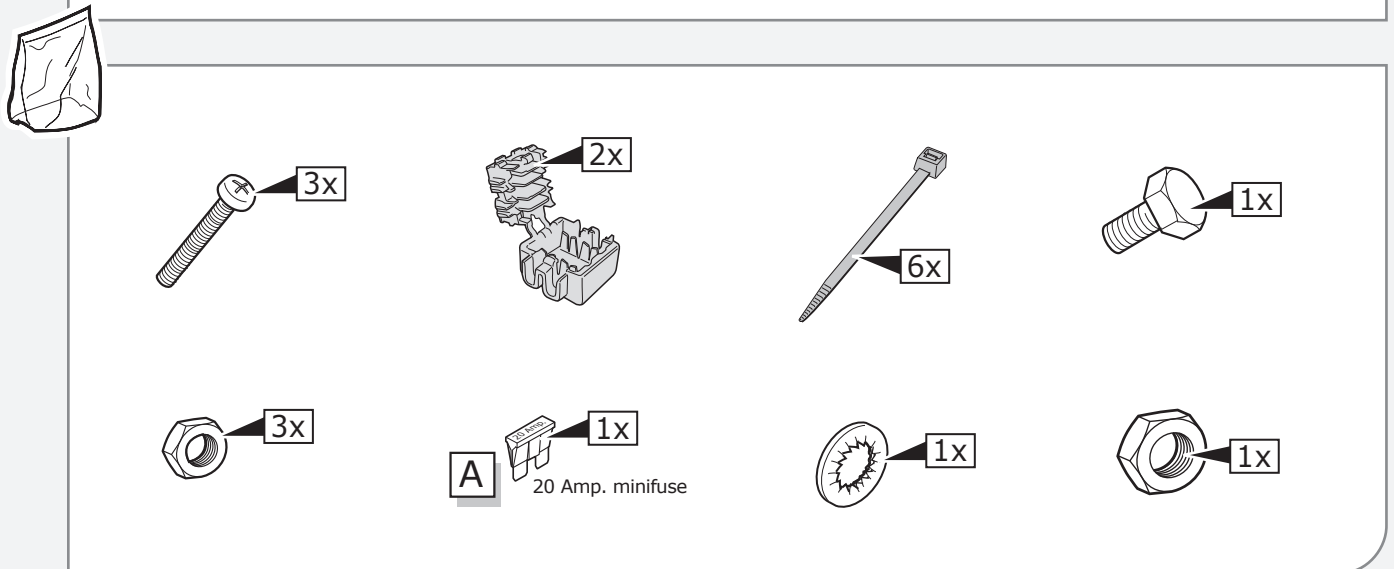
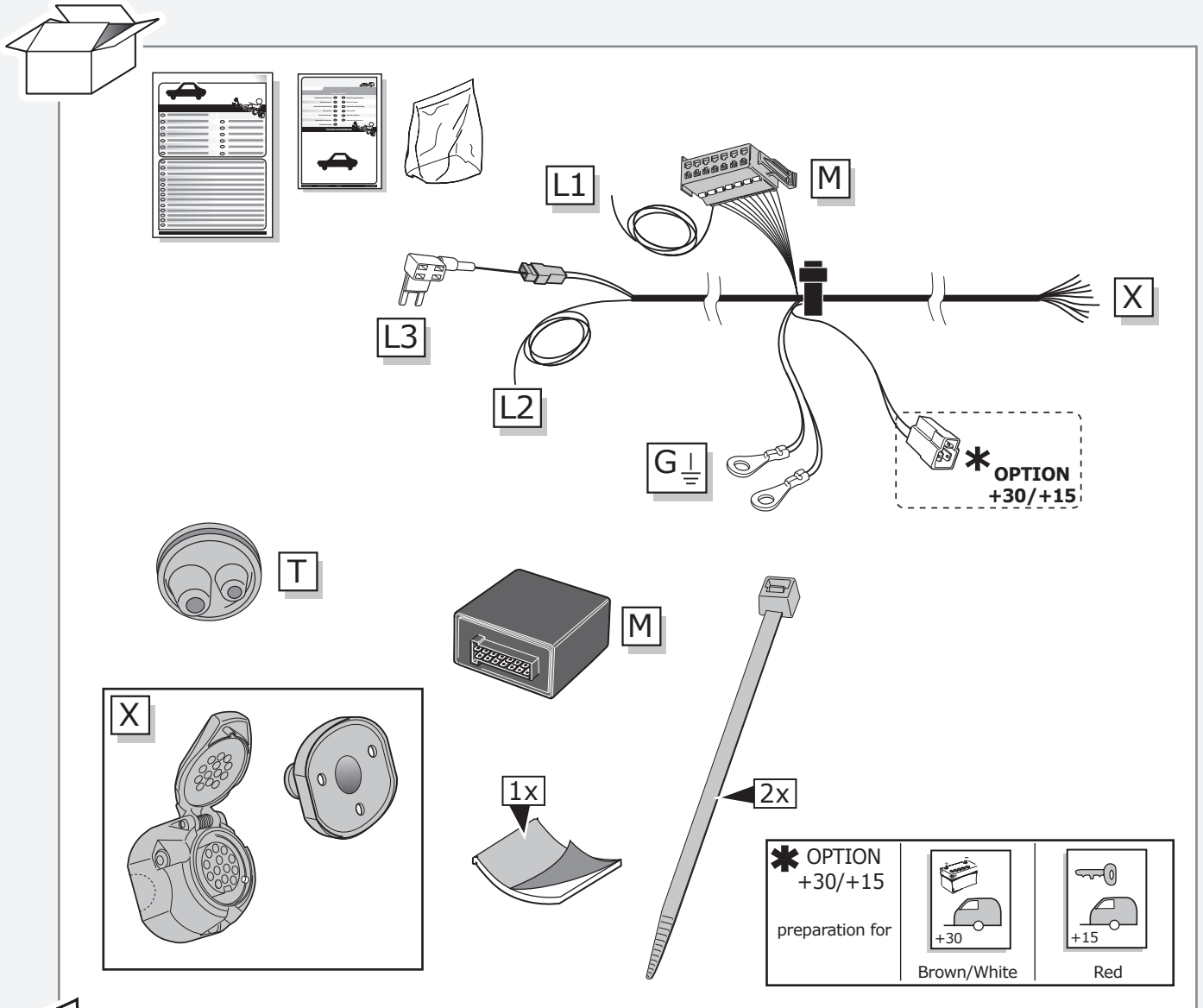


Partnr.: OP-052-D1U

- Fitting instructions electric wiring kit tow bar with 13-P socket up to DIN/ISO Norm 11446.
- We would expressly point out that assembly not carried out properly by a competent installer will result in cancellation of any right to damage compensation, in particular those arising by virtue of the product liability act.
- Contents of these kits and their fitting manuals are subject to alteration without notice, please ensure that these instructions are read and fully understood before commencing installation.
- Do not overload circuits; the maximum loads per connection are detailed in this manual.
- Attention! Before Installation, please read this manual carefully and inform your customer to consult the vehicle owners manual to check for any vehicle modifications required before towing.
- In the event of functional problems, troubleshooting must be limited to about 0.5 hours, contact the technical support:
t.skinner@ecs-electronics.com / 07440 202 052.



Part list

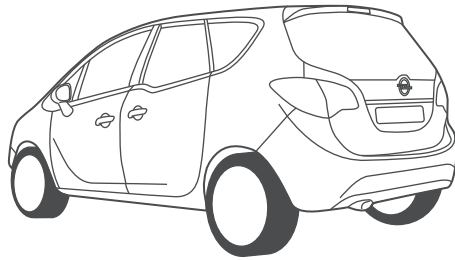


Meriva B

Pag. 4

-

Pag. 7

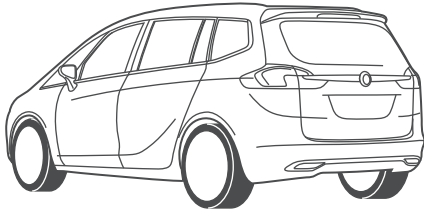


Zafira

Pag. 8

-

Pag. 11

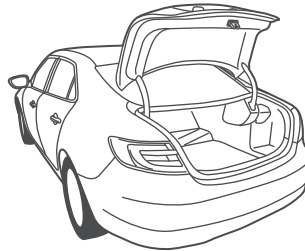


Saab 9-5

Pag. 12

-

Pag. 15

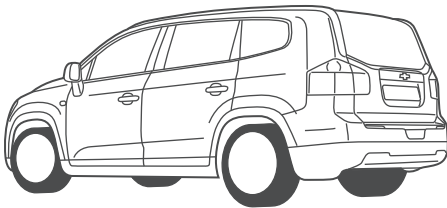


Orlando

Pag. 16

-

Pag. 19

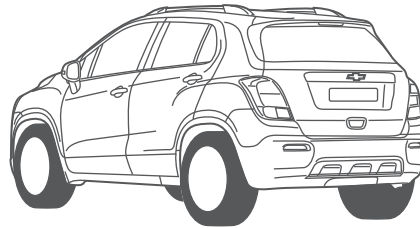


Trax

Pag. 20

-

Pag. 23

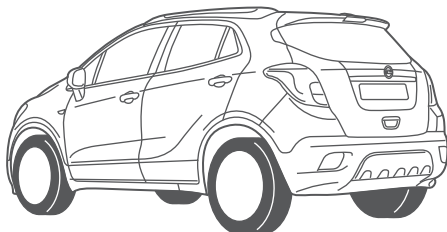


Mokka

Pag. 24

-

Pag. 30

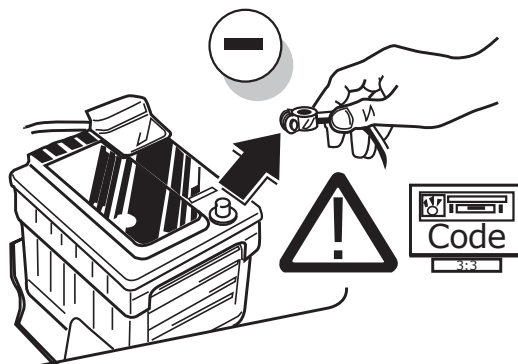
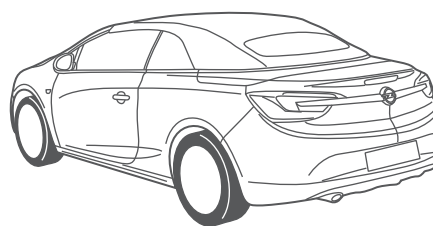


Cascada

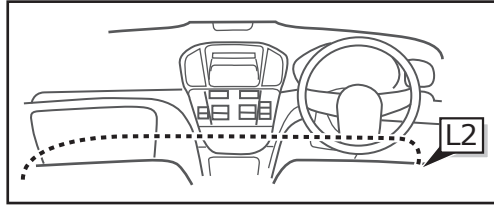
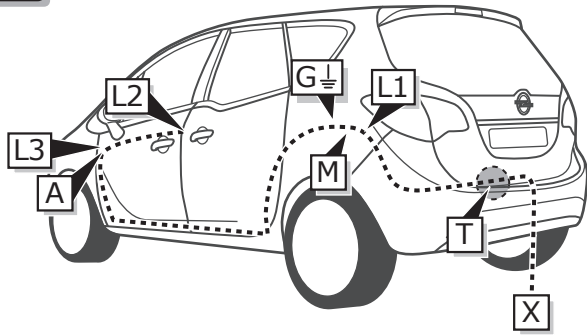
Pag. 31

-

Pag. 34



INFO

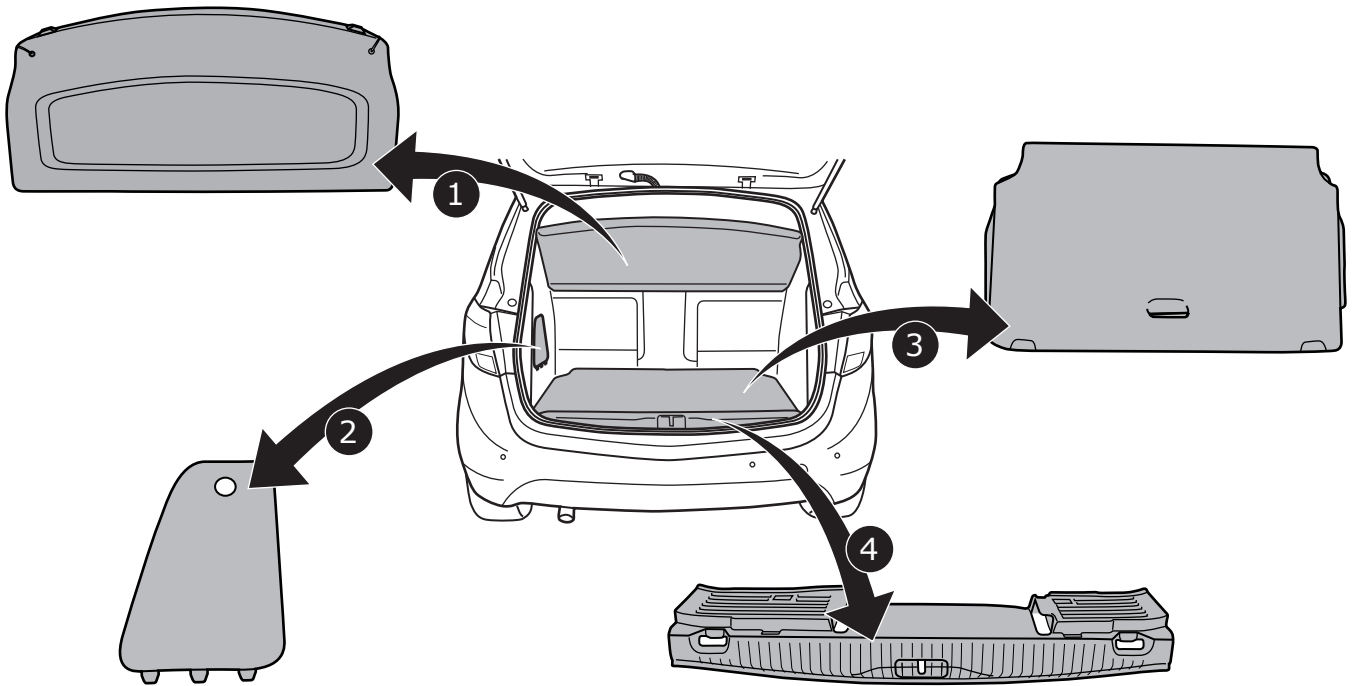


Meriva B

Pag. 4

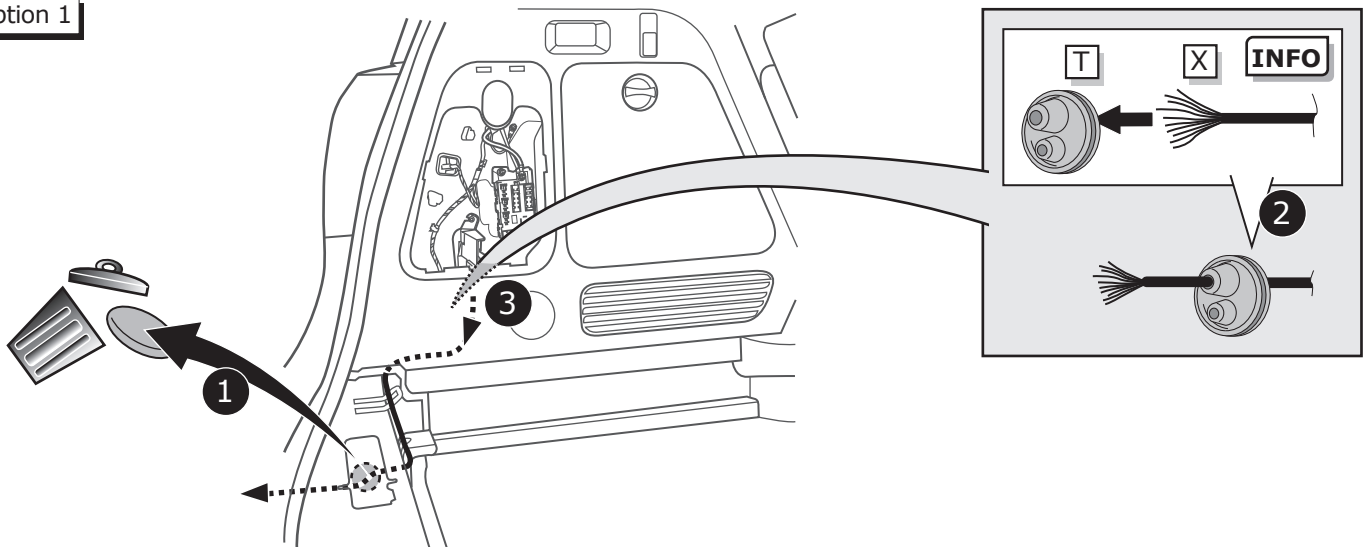
-
Pag. 7

1



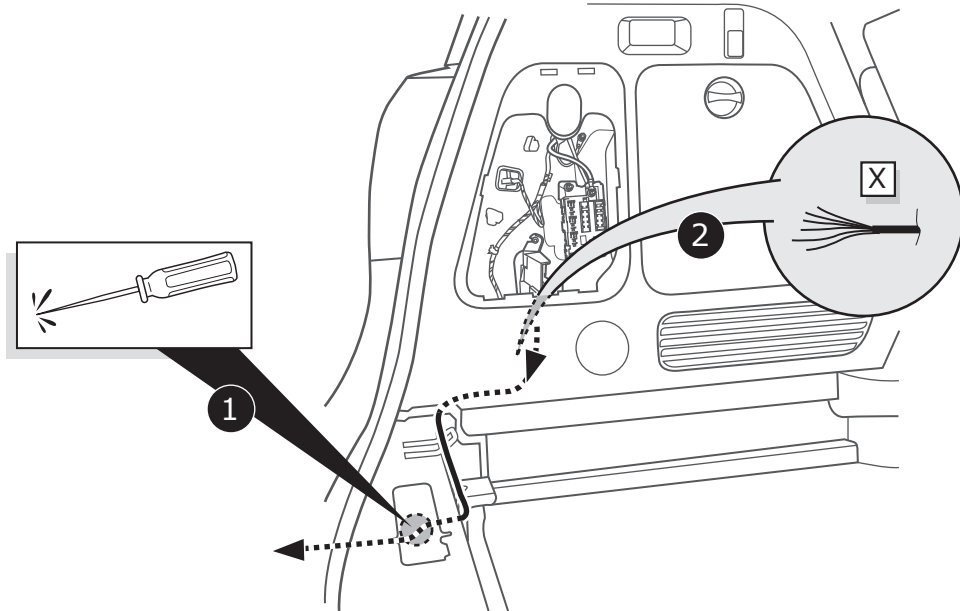
2

Option 1



3

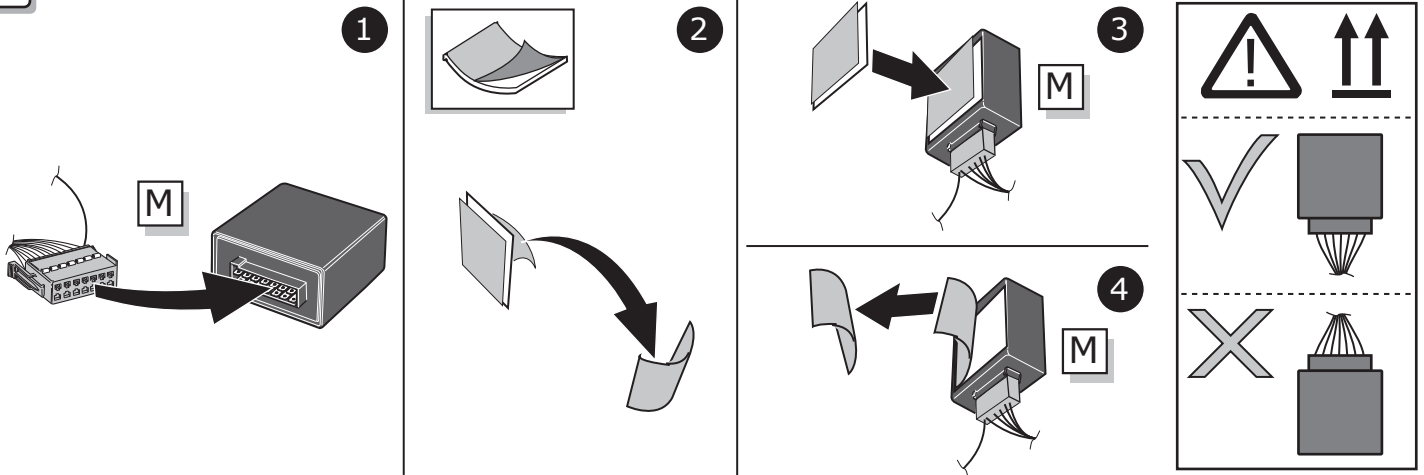
Option 2



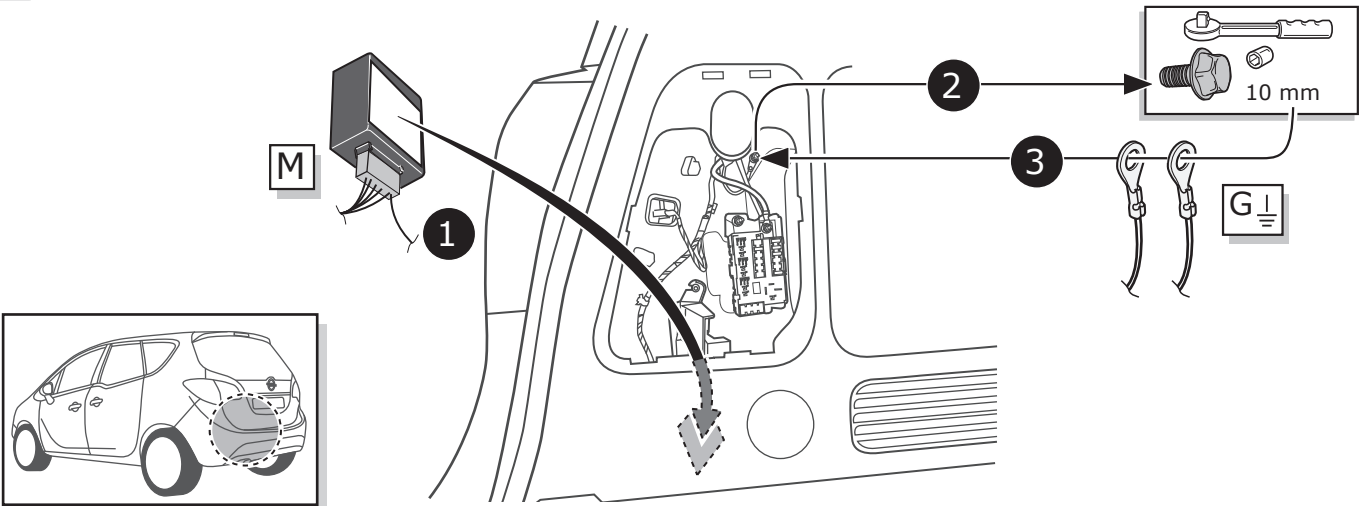
4



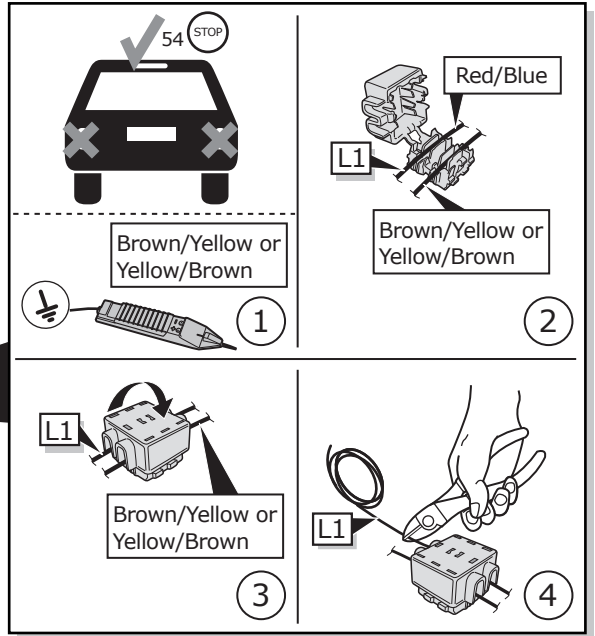
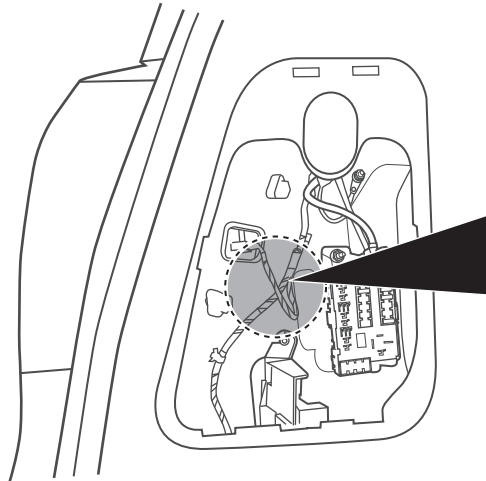
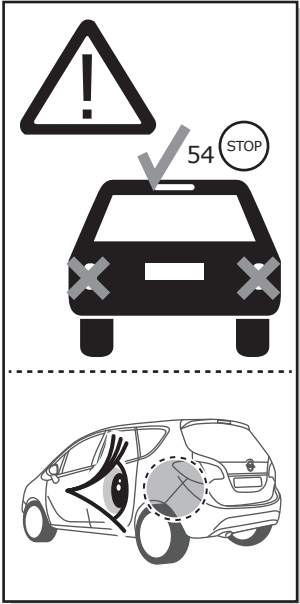
5



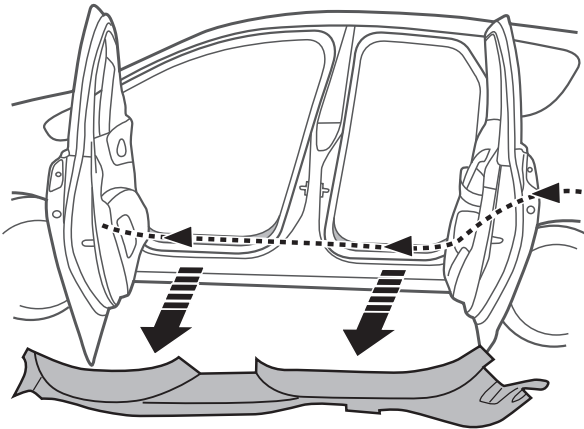
6



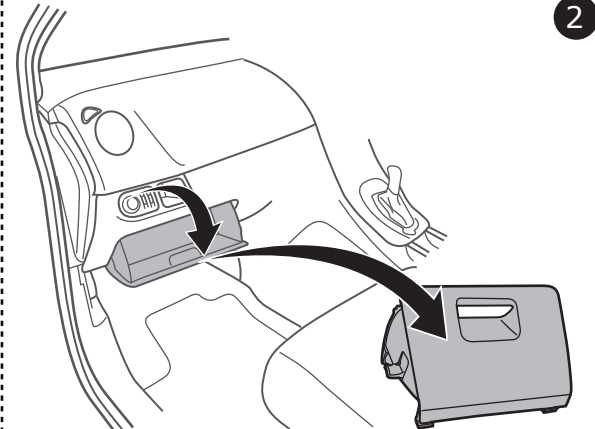
7



8

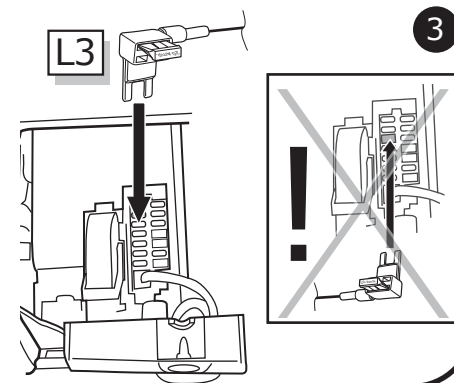
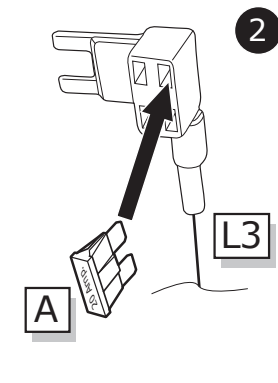
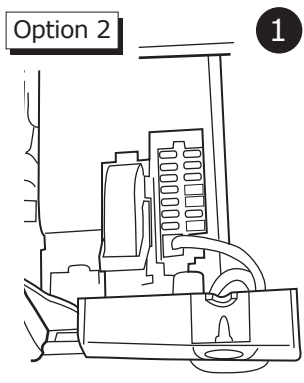
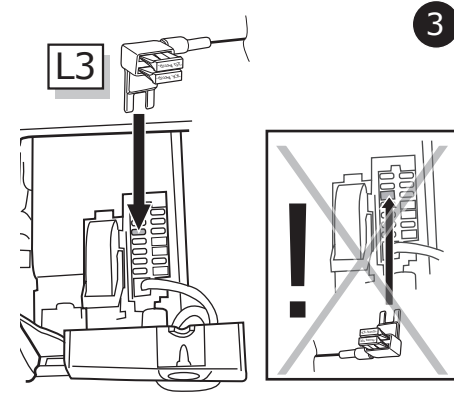
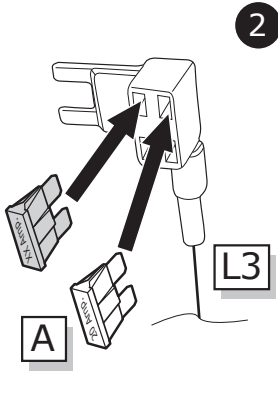
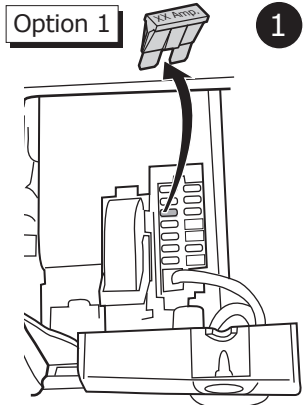
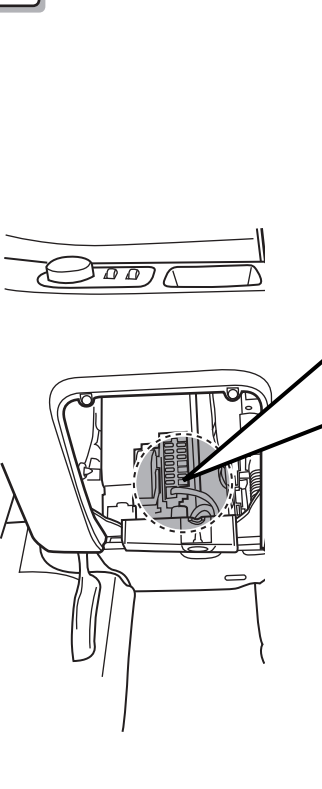


1

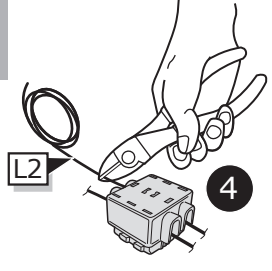
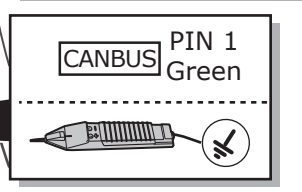
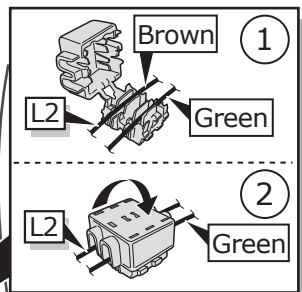
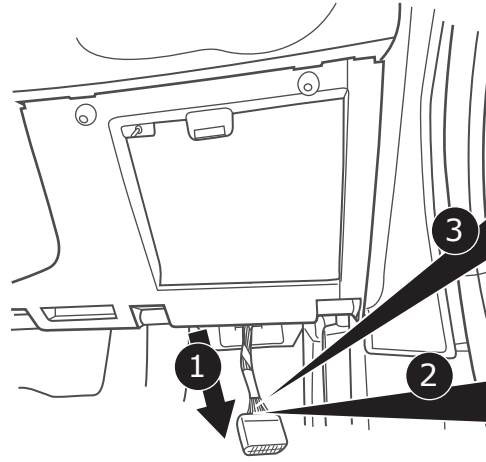
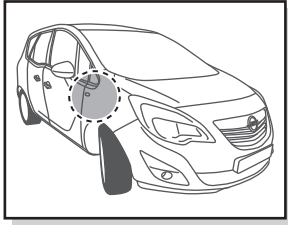
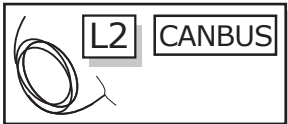


2

9



10

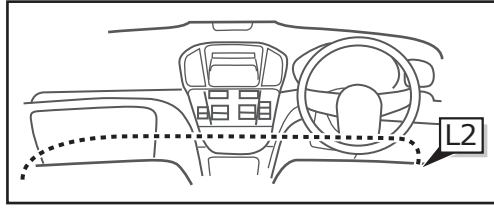
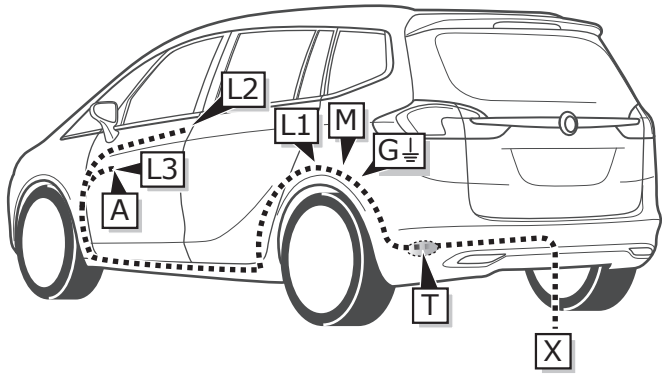


11



Pag. 36

INFO

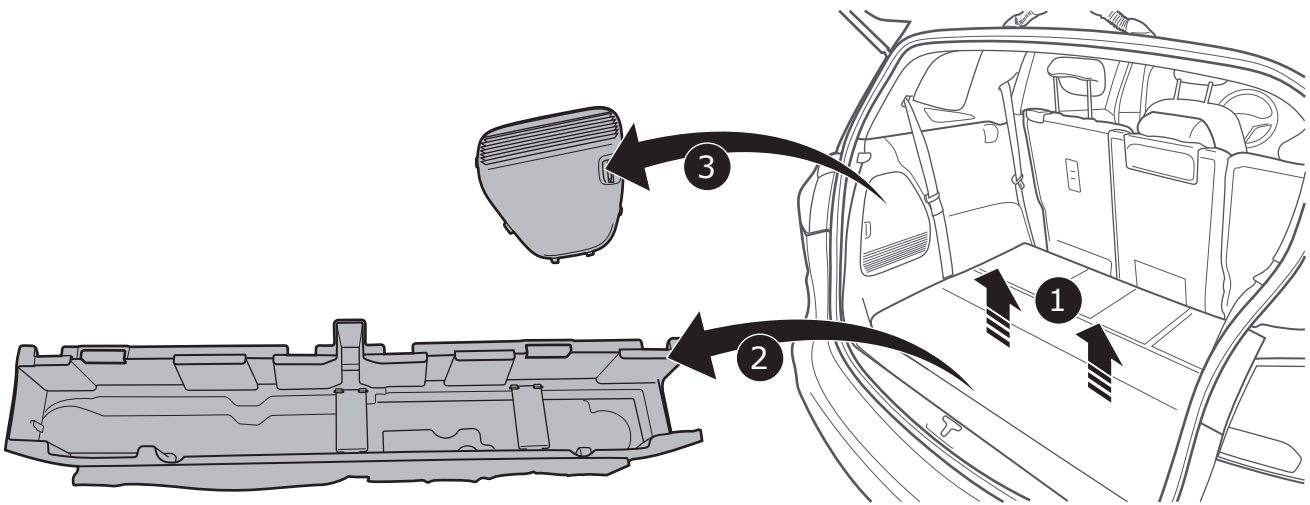


Zafira

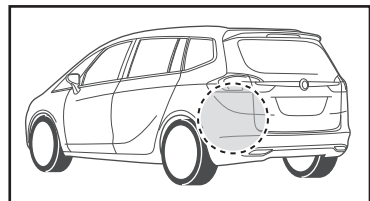
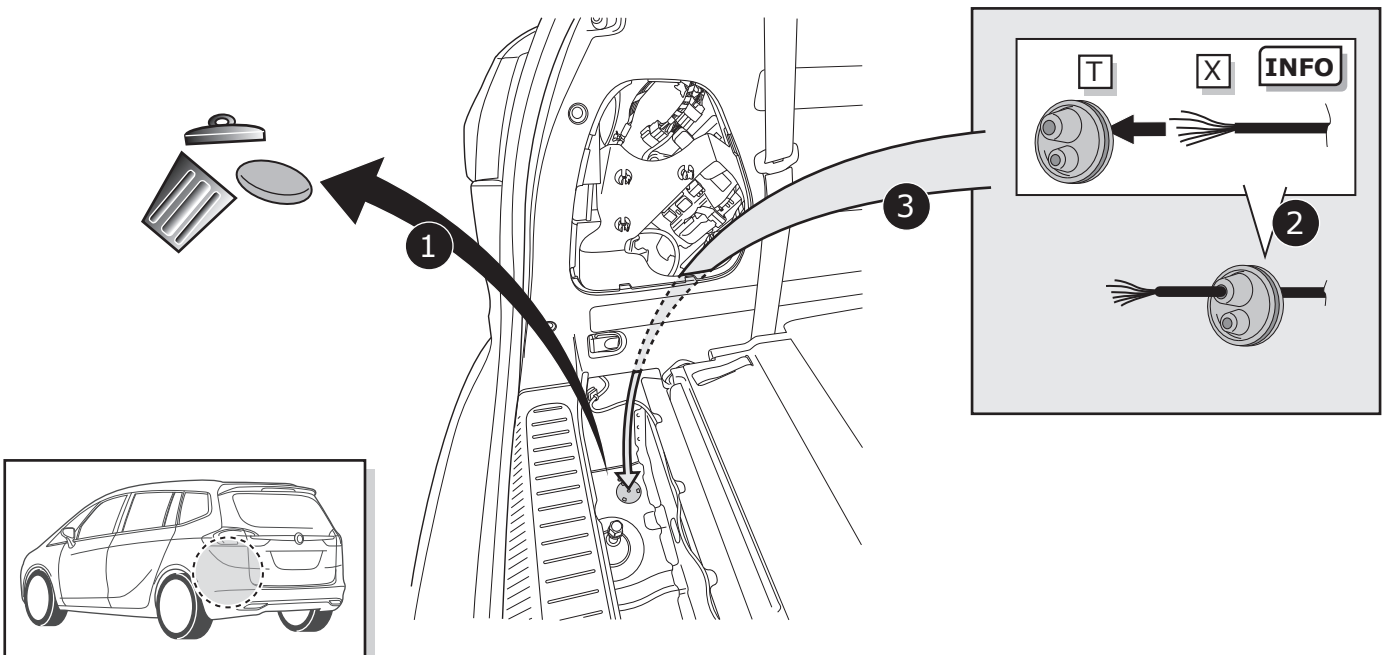
Pag. 8

Pag. 11

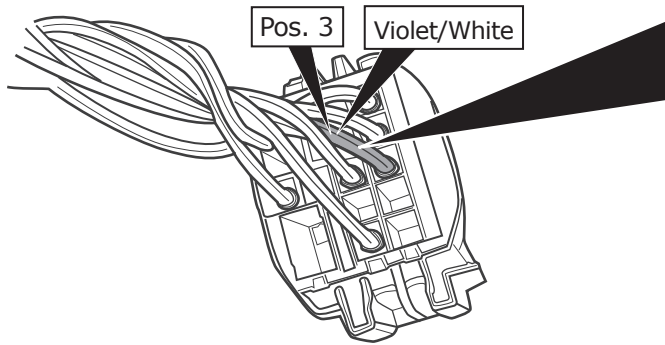
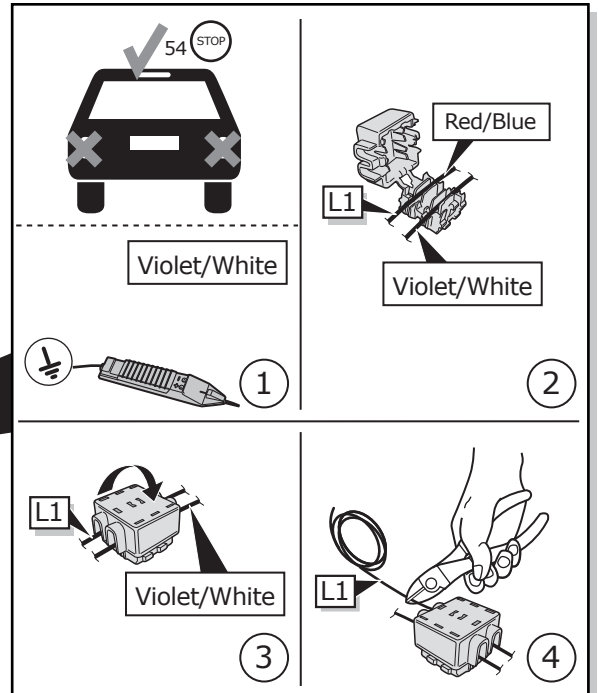
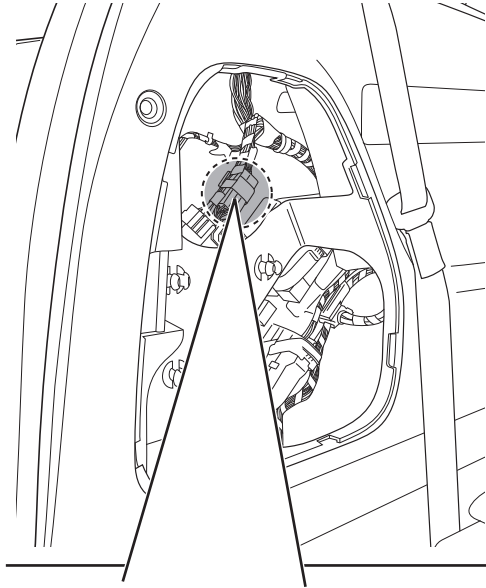
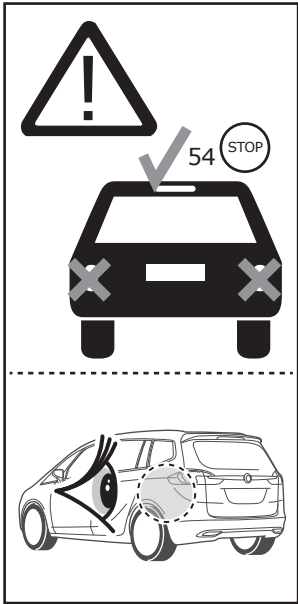
1



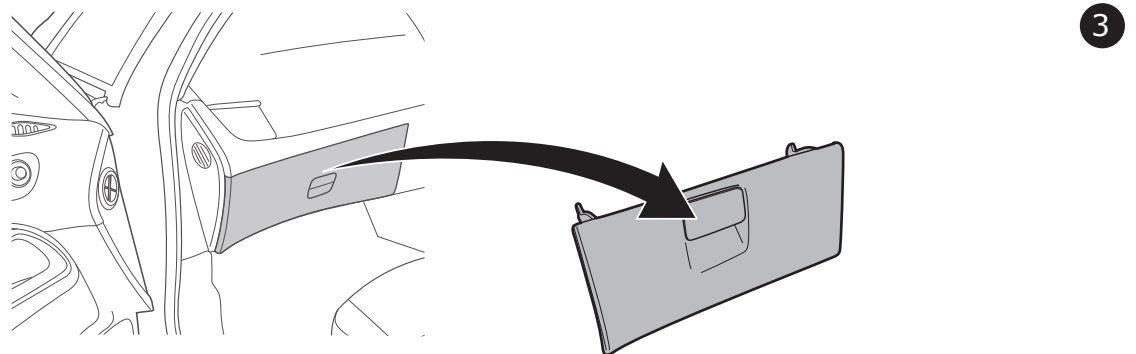
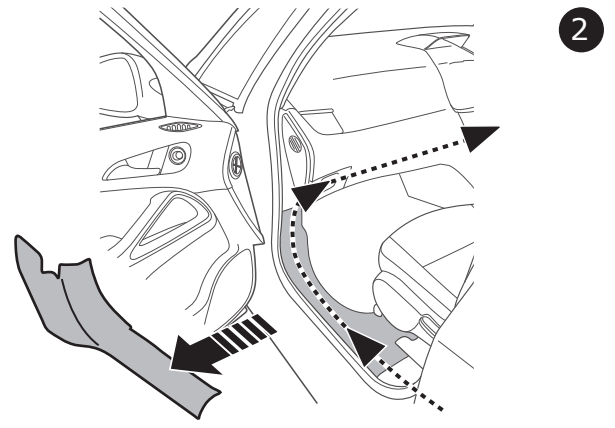
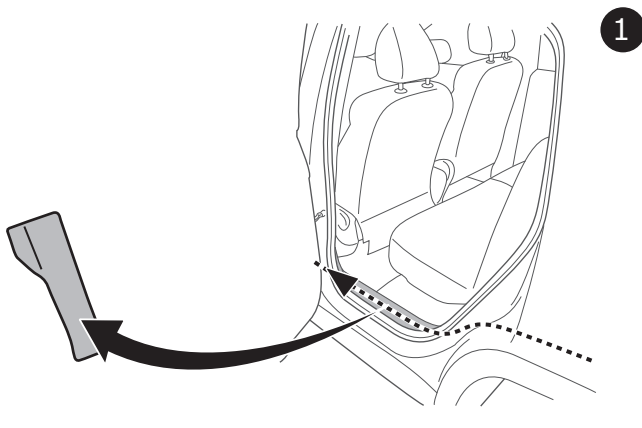
2



6



7

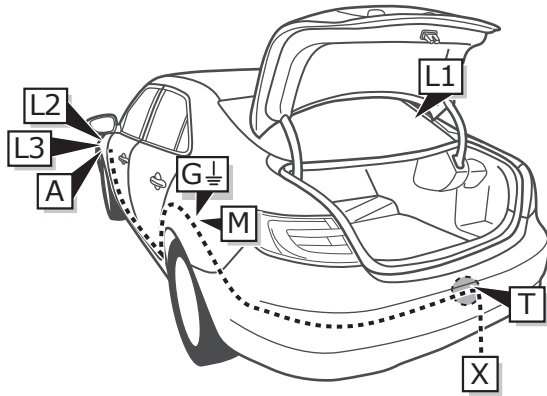


INFO

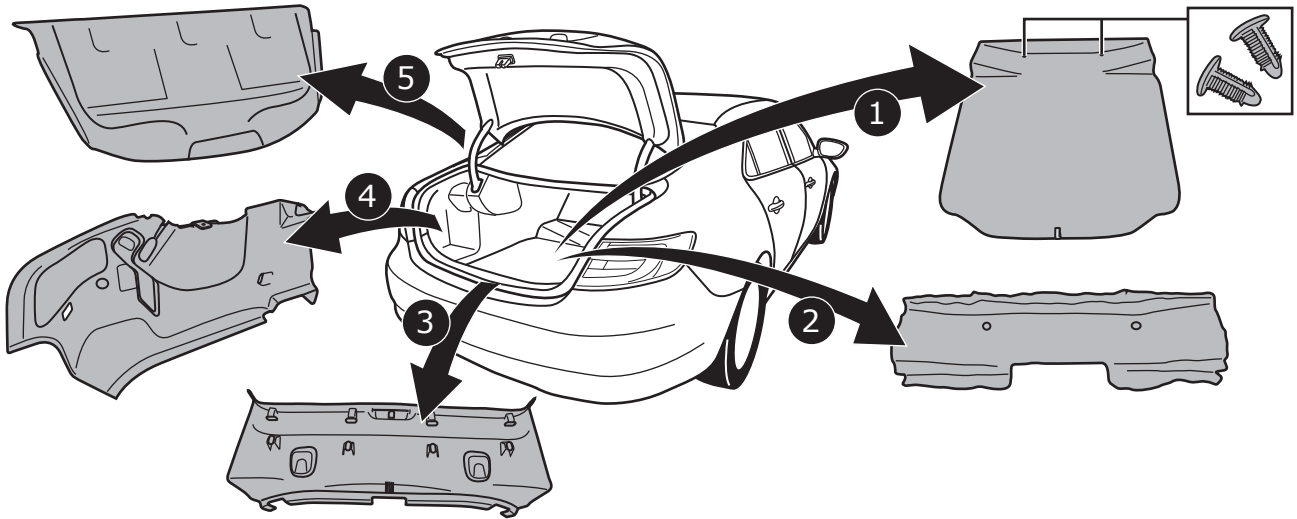
Saab 9-5

Pag. 12

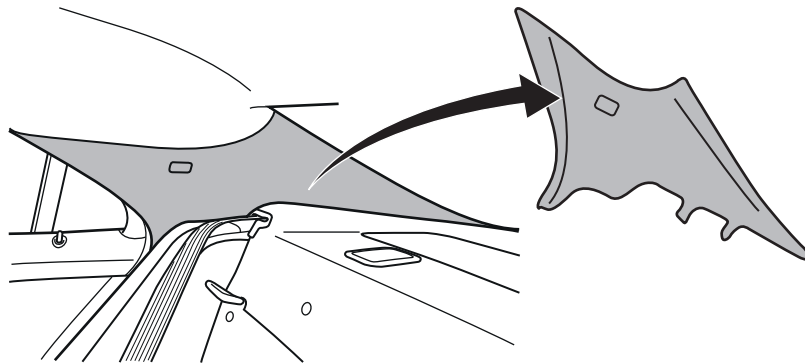
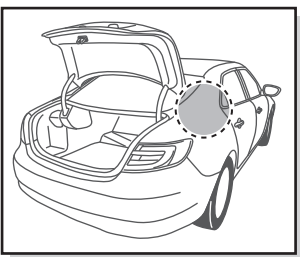
Pag. 15



1

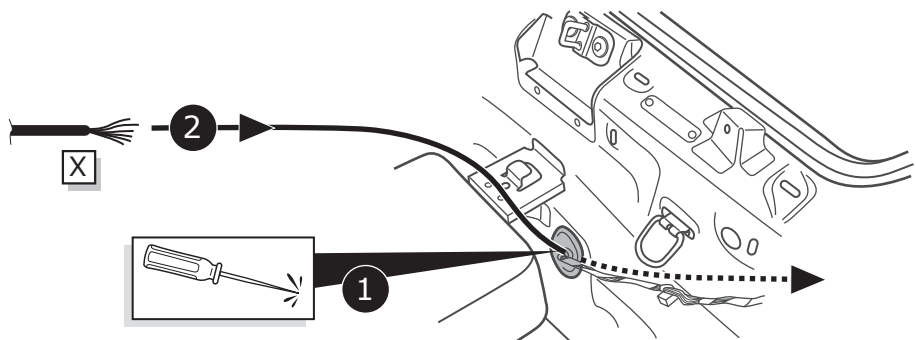
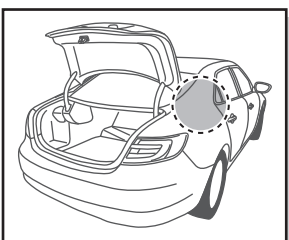


2



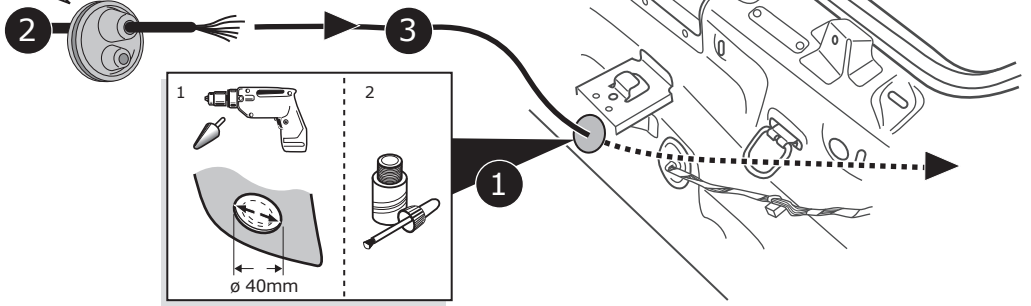
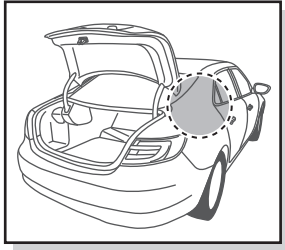
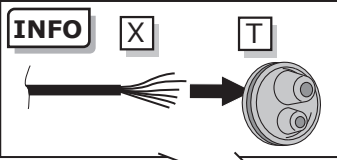
3

Option 1



4

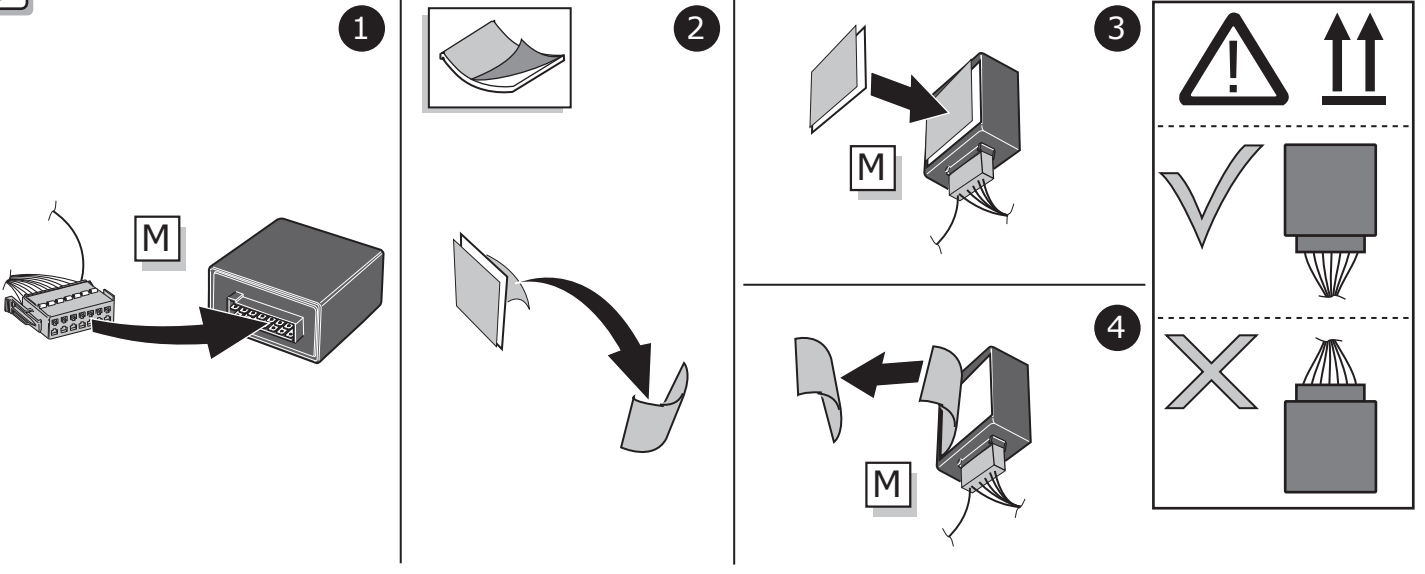
Option 2



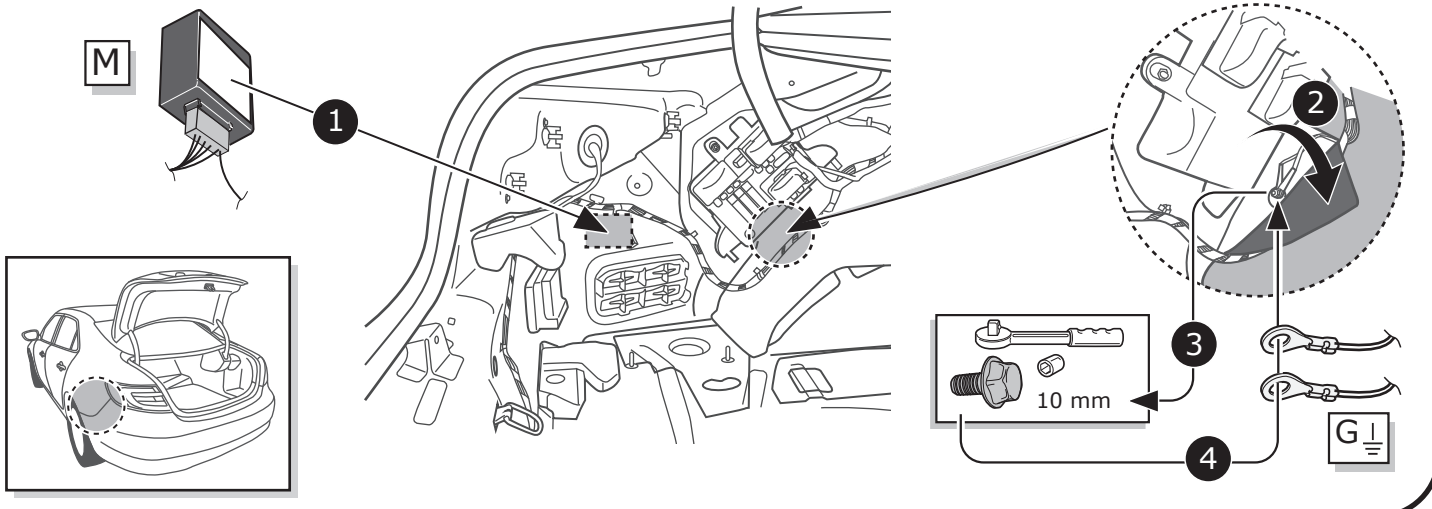
5



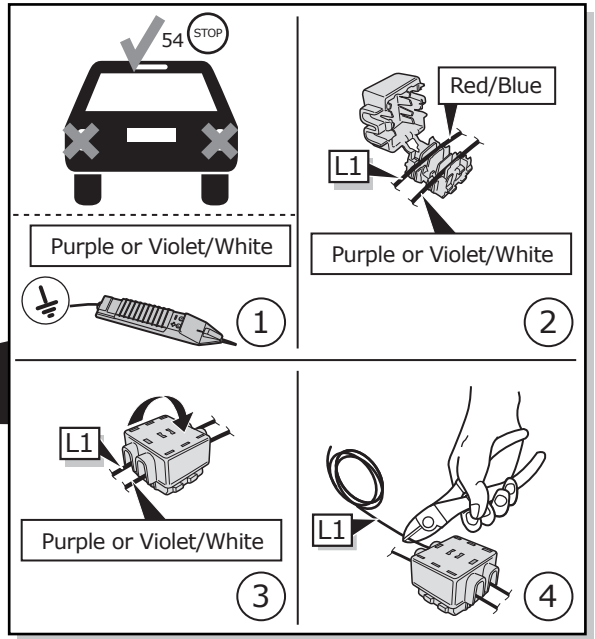
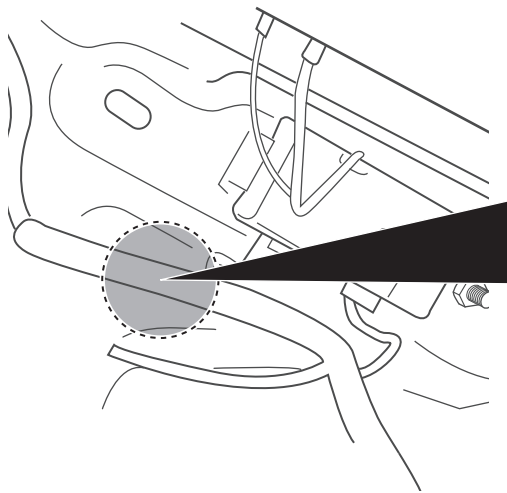
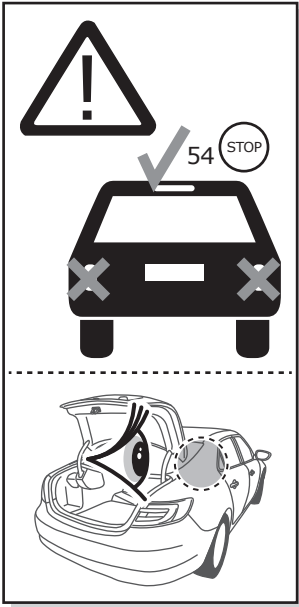
6



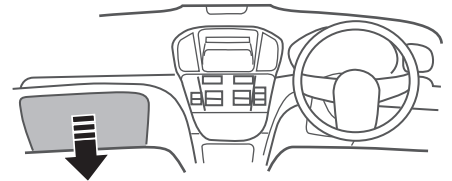
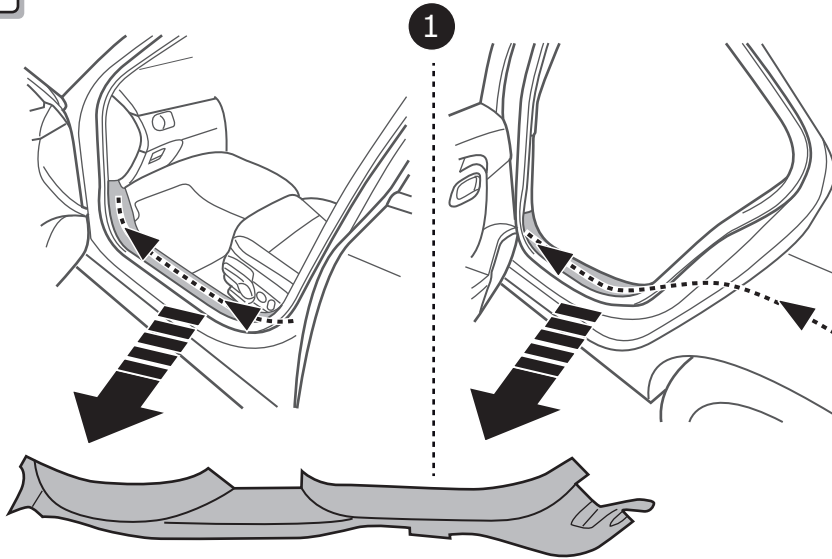
7



8

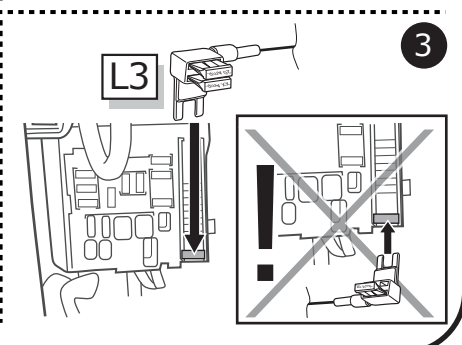
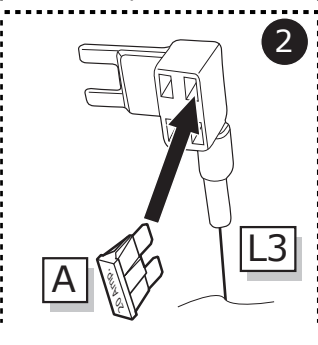
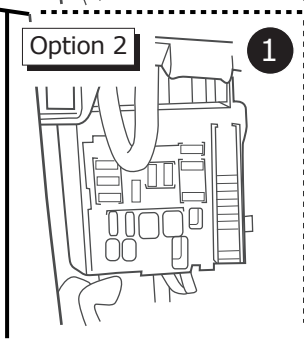
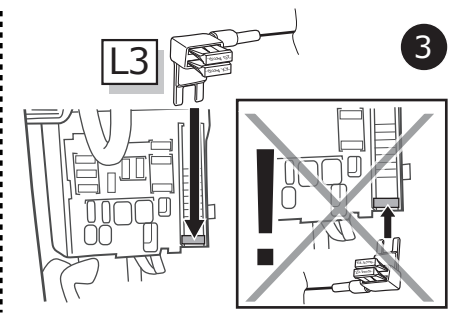
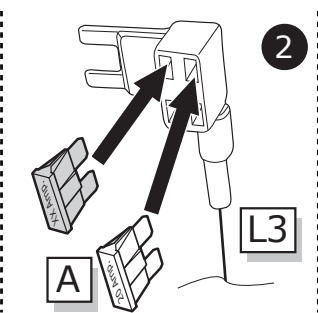
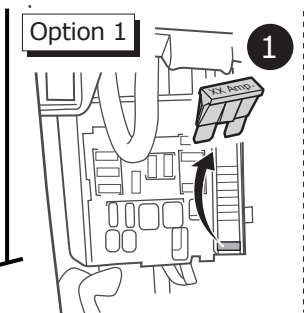
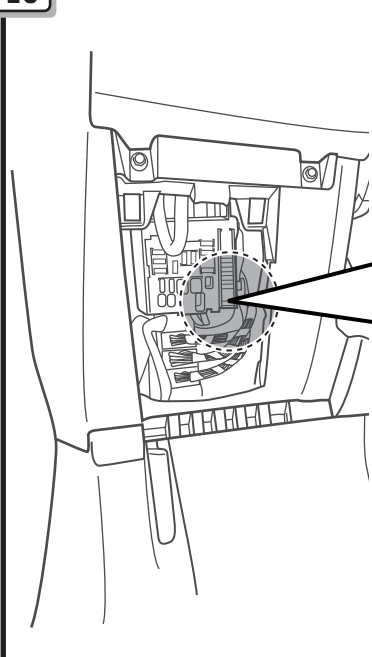


9



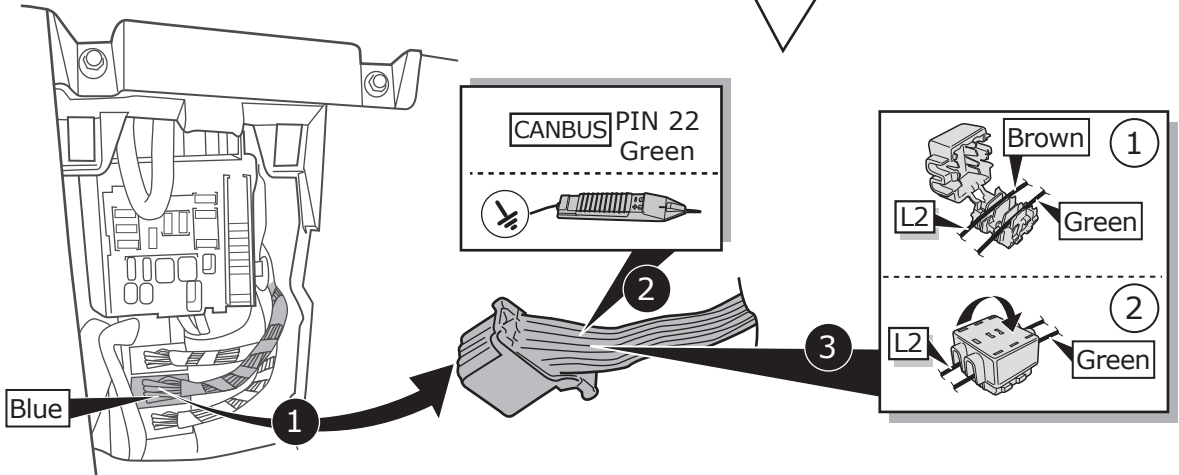
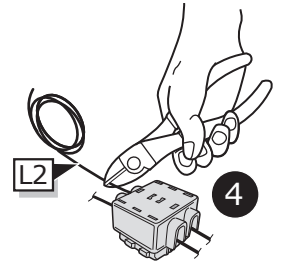
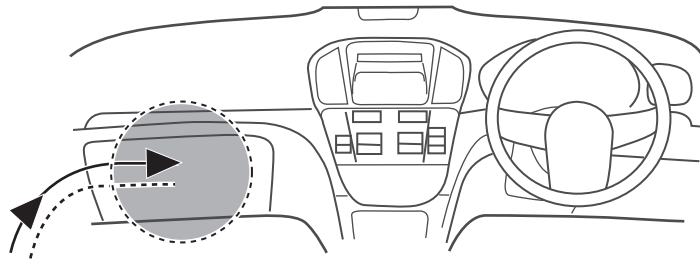
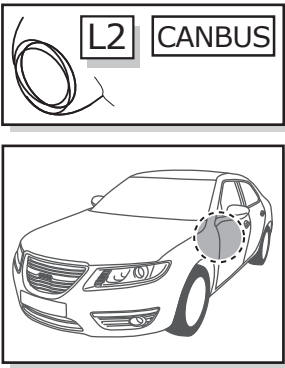
2

10



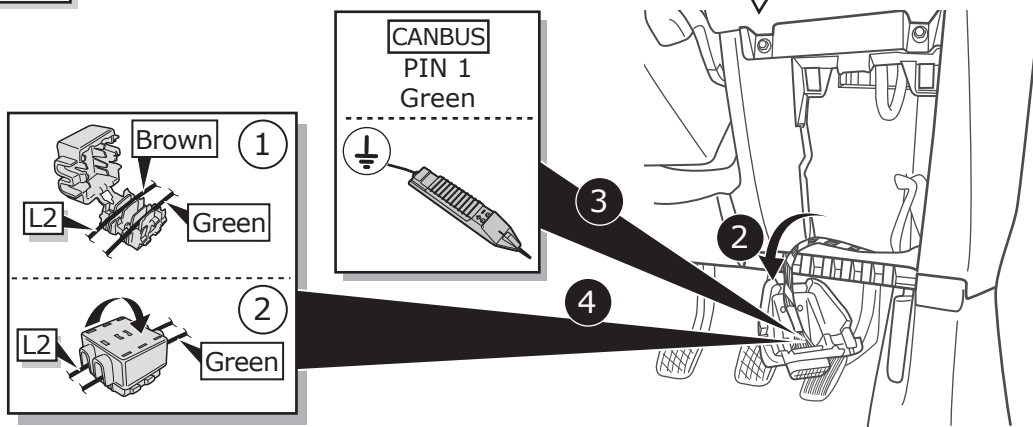
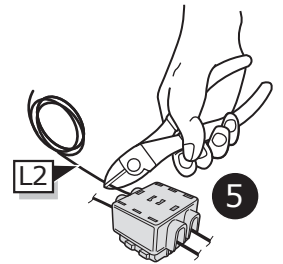
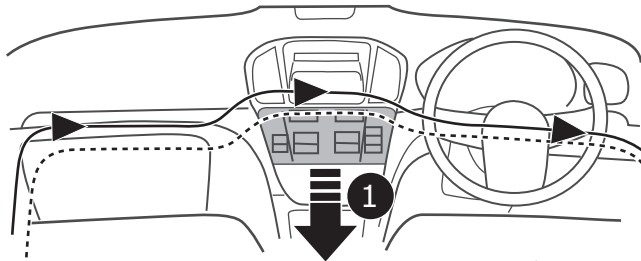
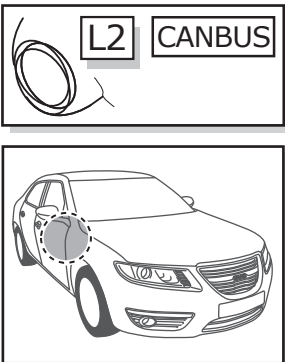
11

Option 1



12

Option 2



13

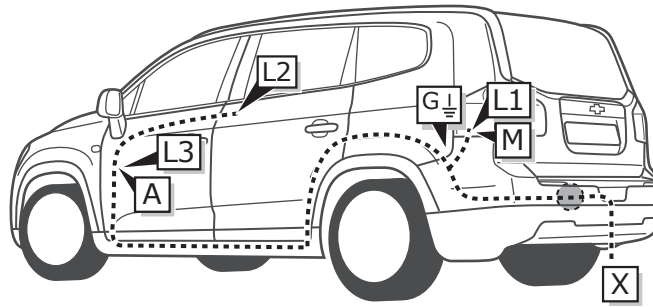


INFO

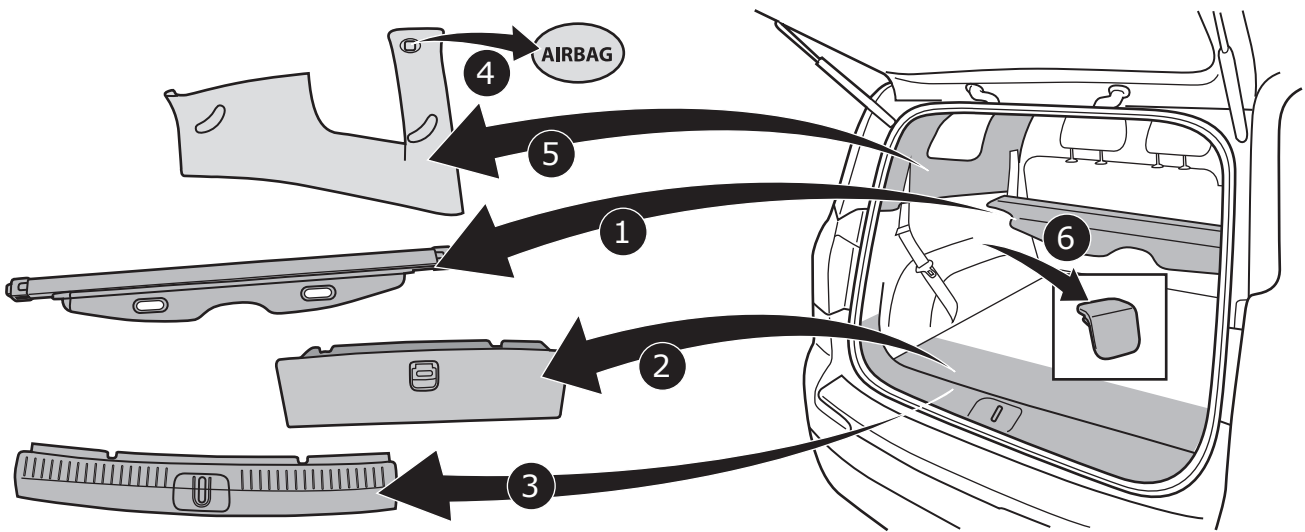
Orlando

Pag. 16

Pag. 19



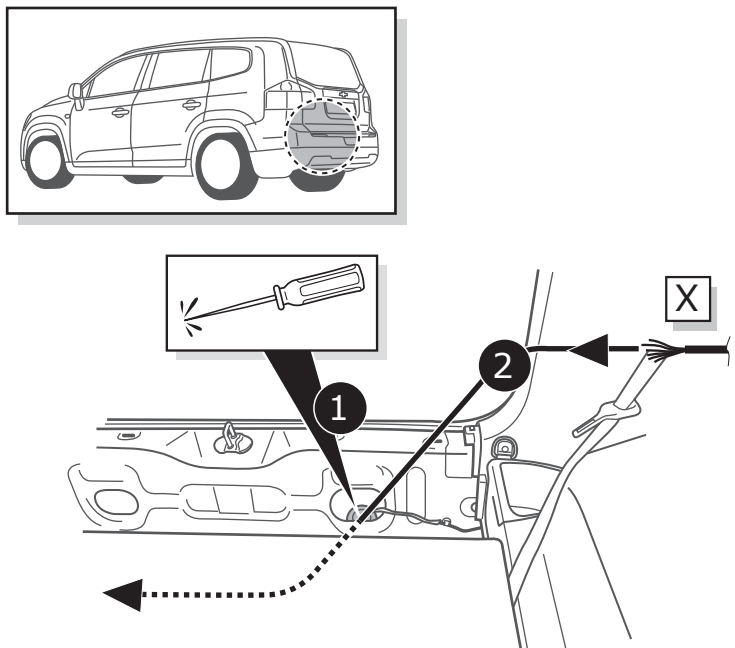
1



2



3



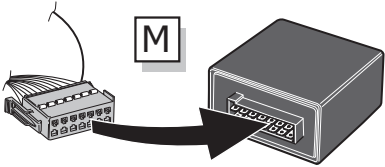
4



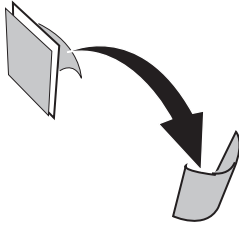
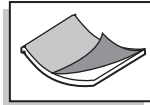
Pag. 35

5

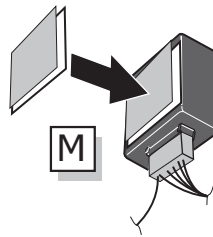
1



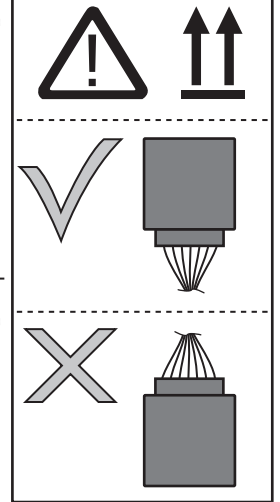
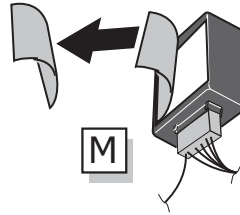
2



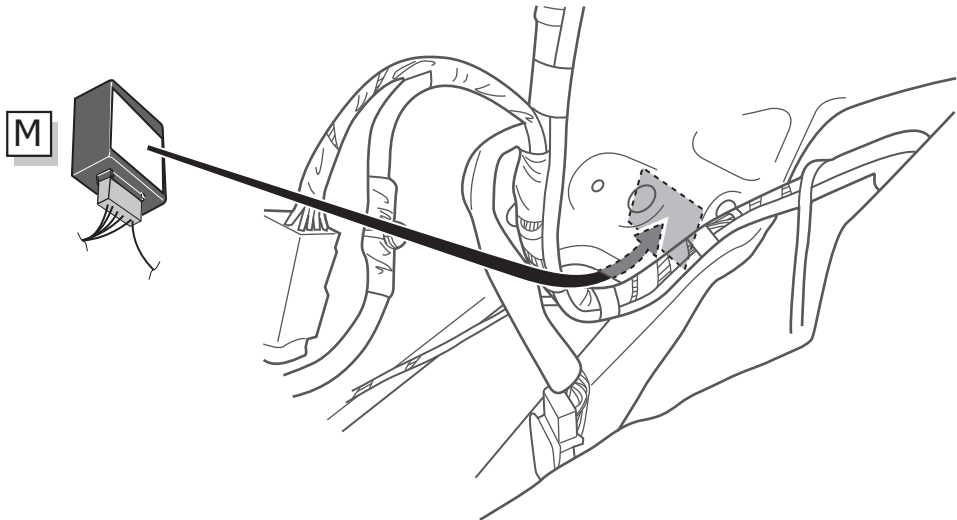
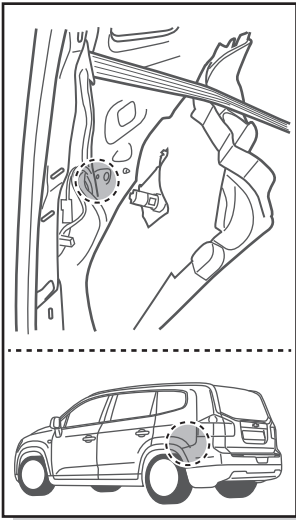
3



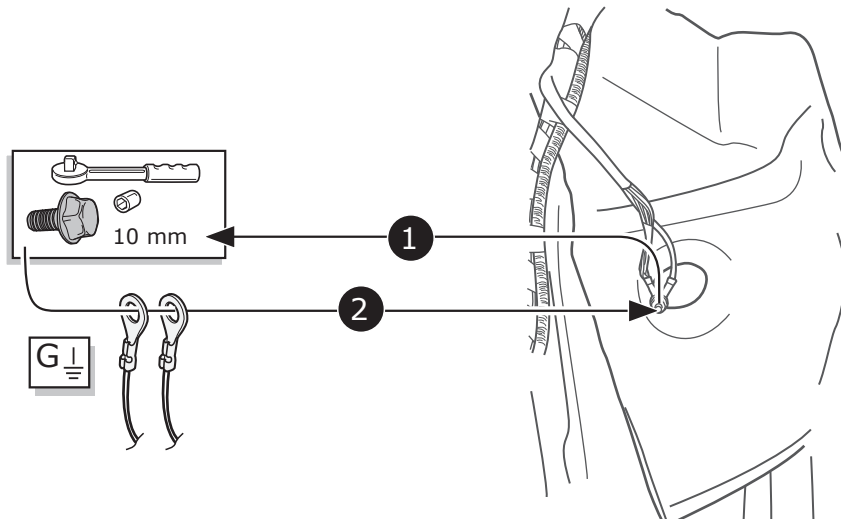
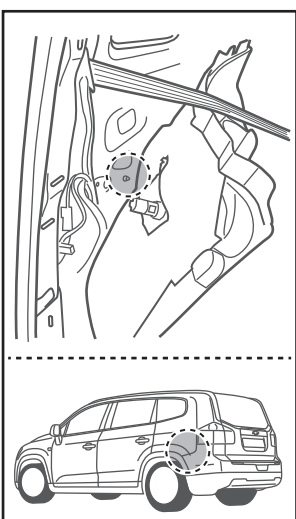
4



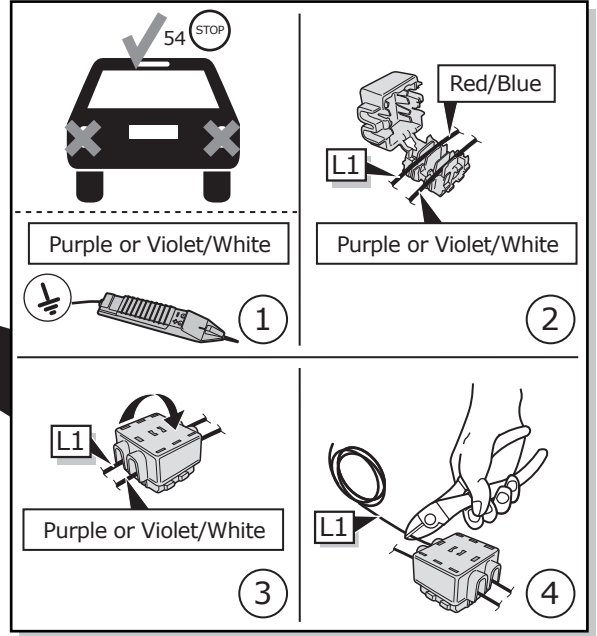
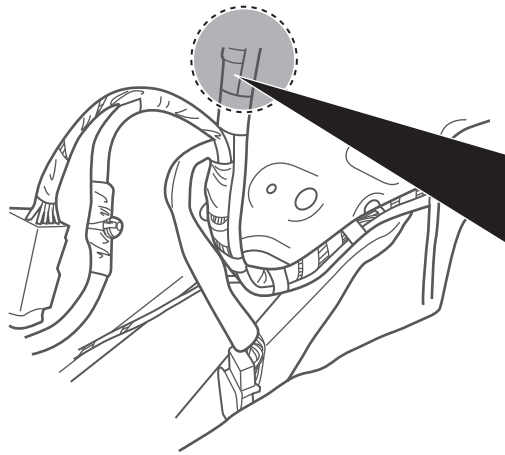
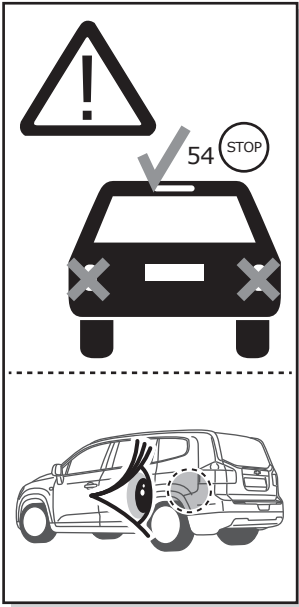
6



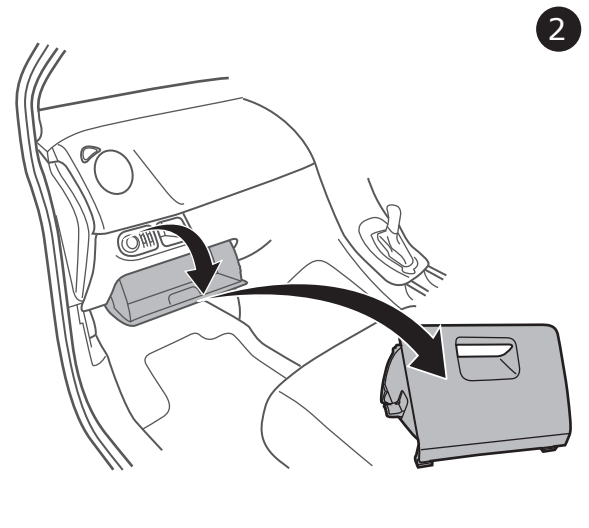
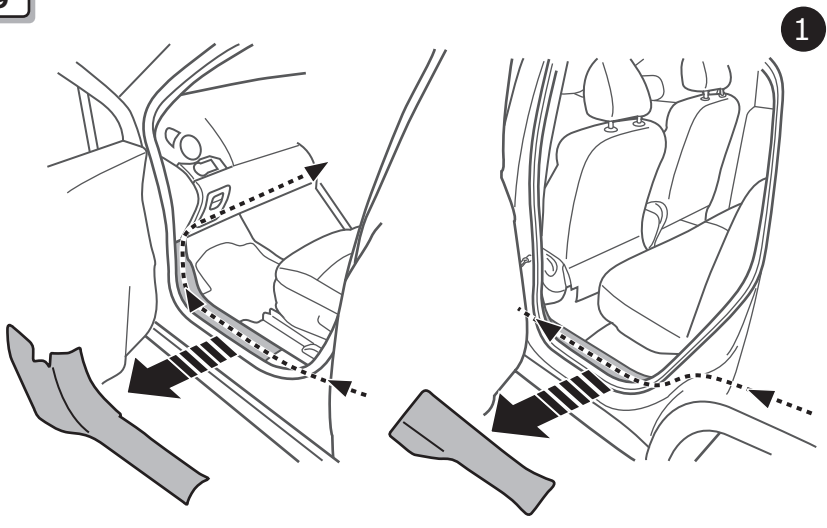
7



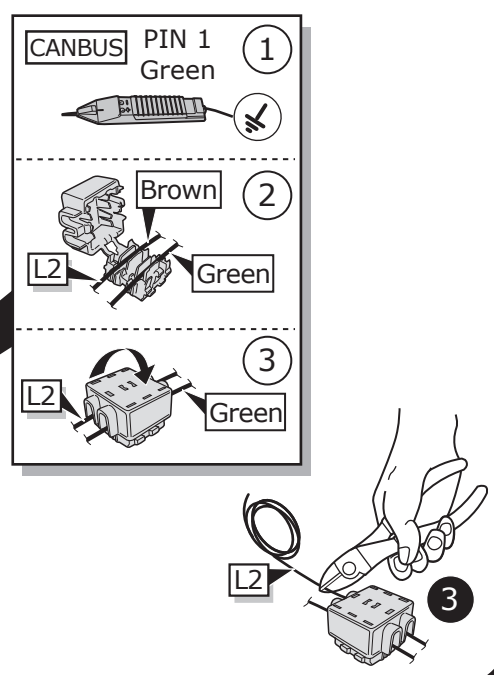
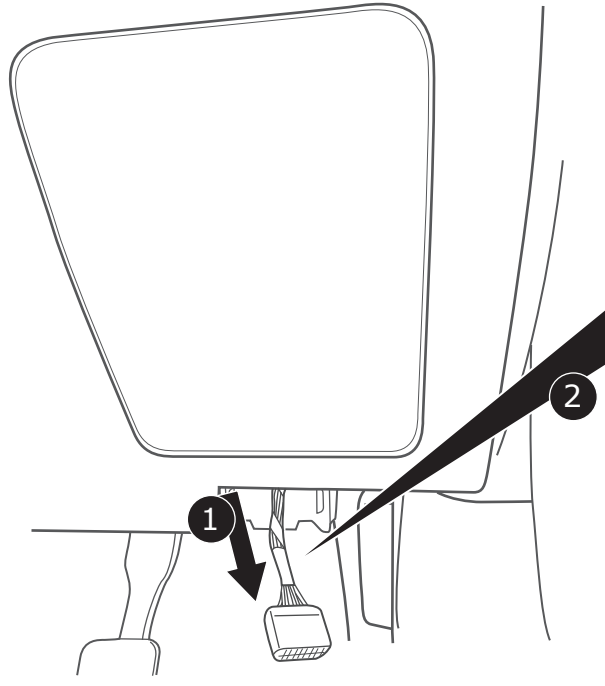
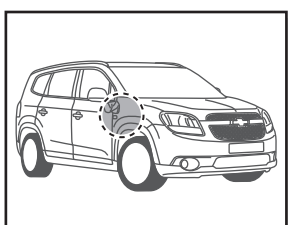
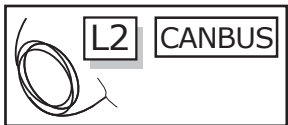
8



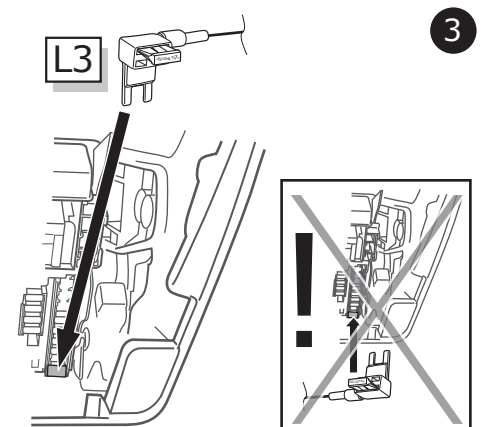
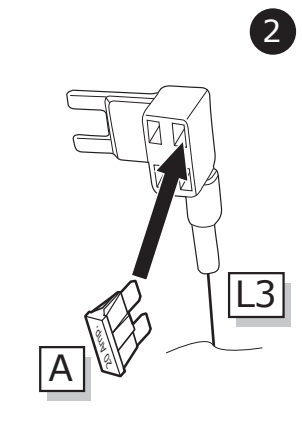
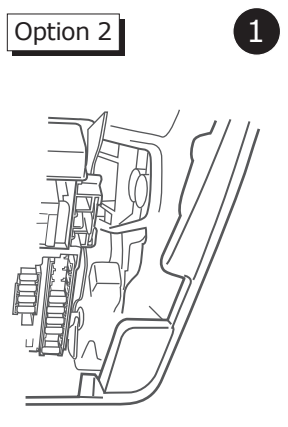
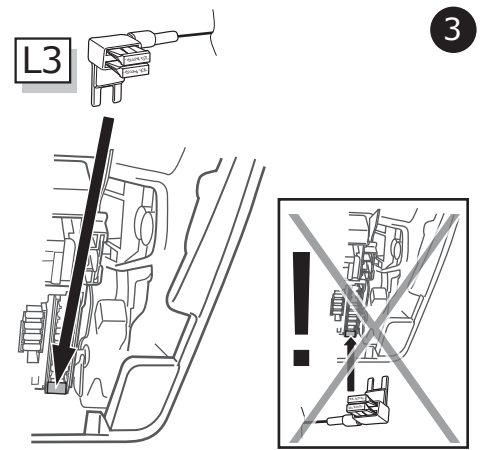
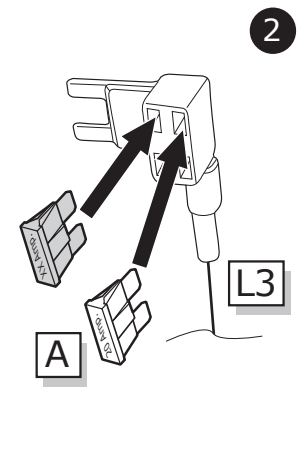
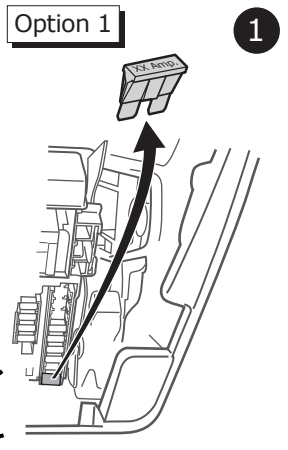
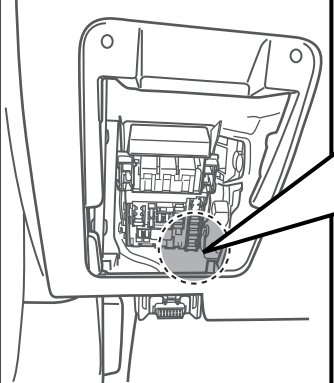
9



10



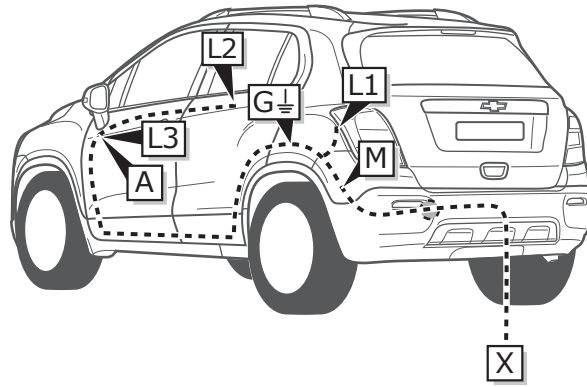
11



12

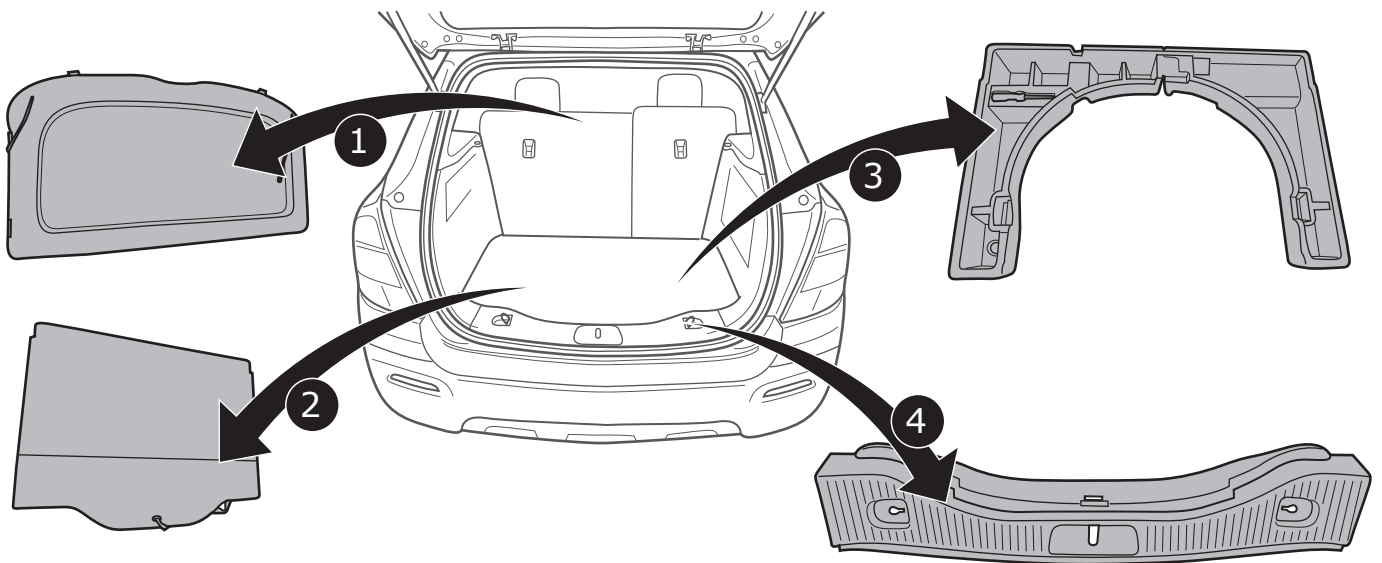


INFO

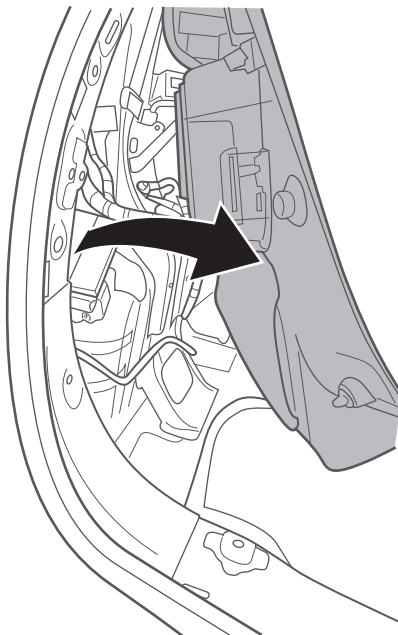


Trax
Pag. 20
-
Pag. 23

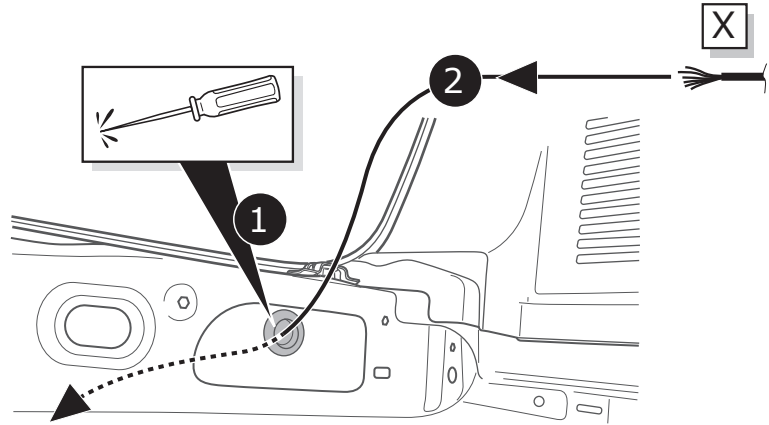
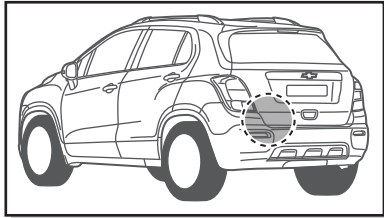
1



2



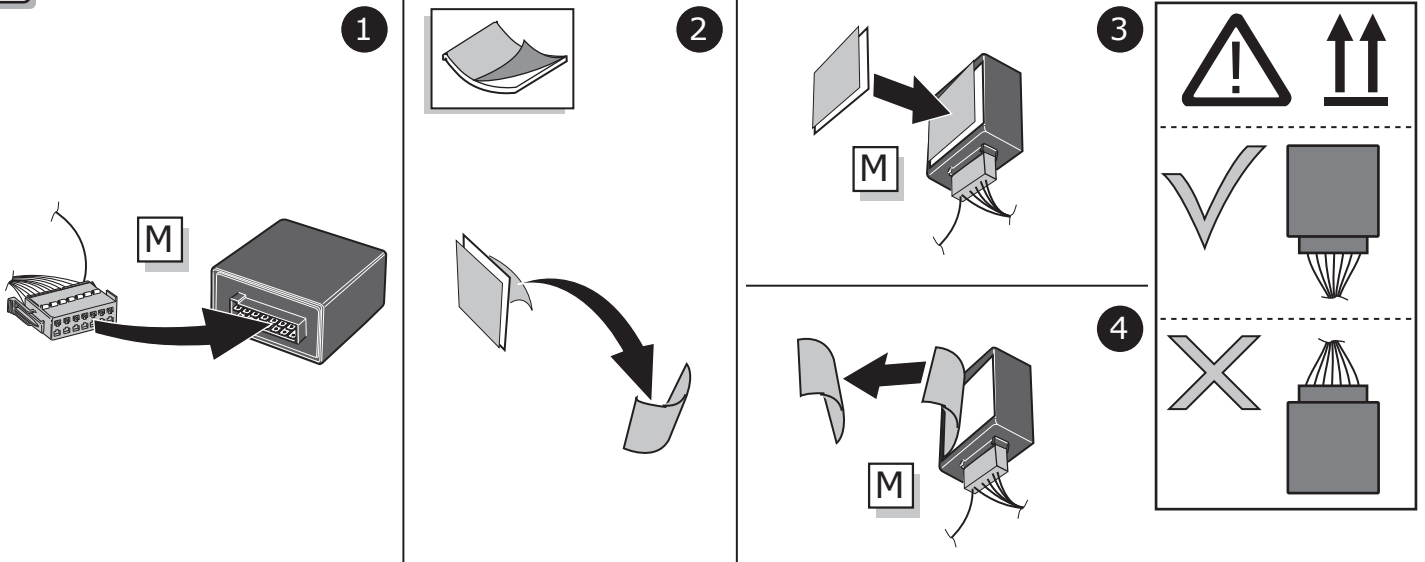
3



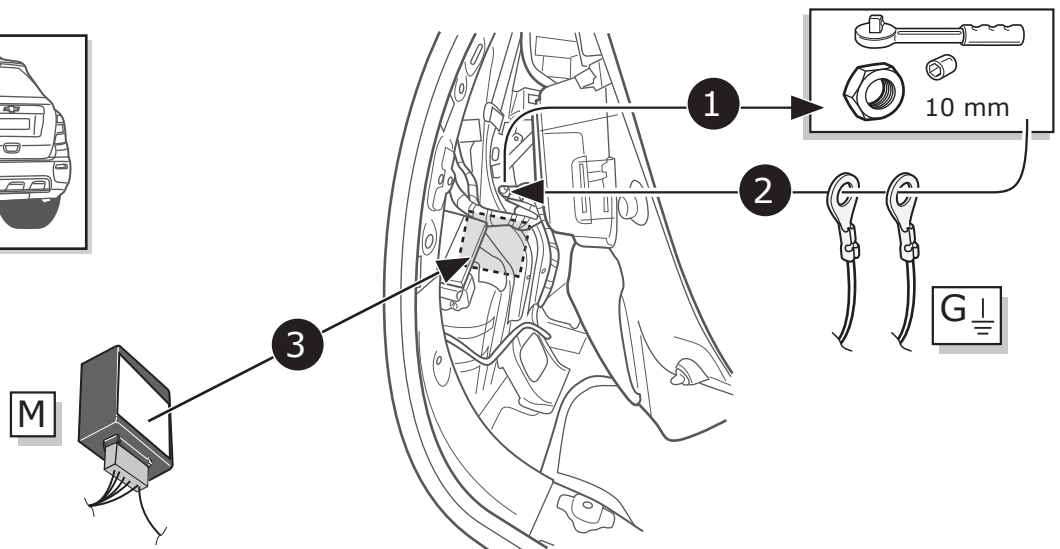
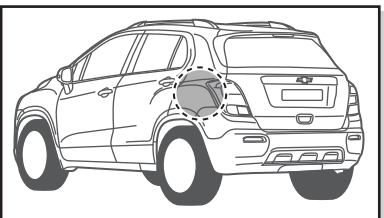
4



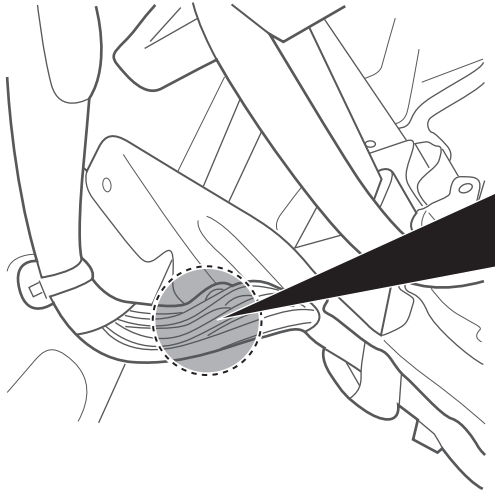
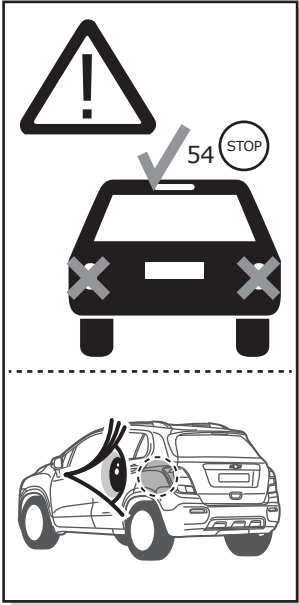
5



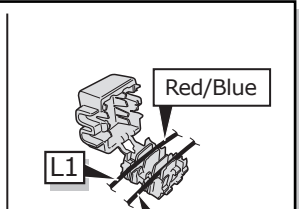
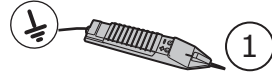
6



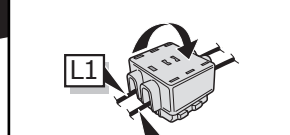
7



Purple or Violet/White



Purple or Violet/White

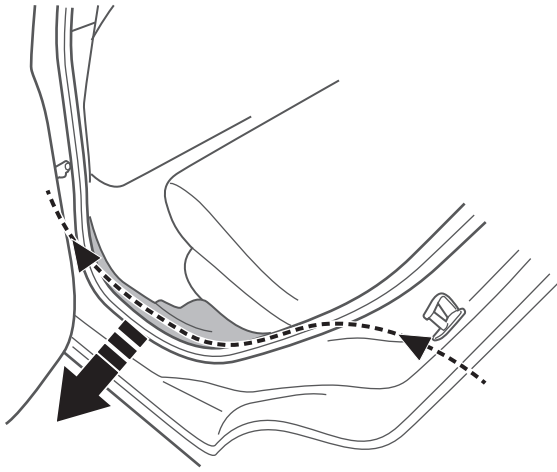


Purple or Violet/White

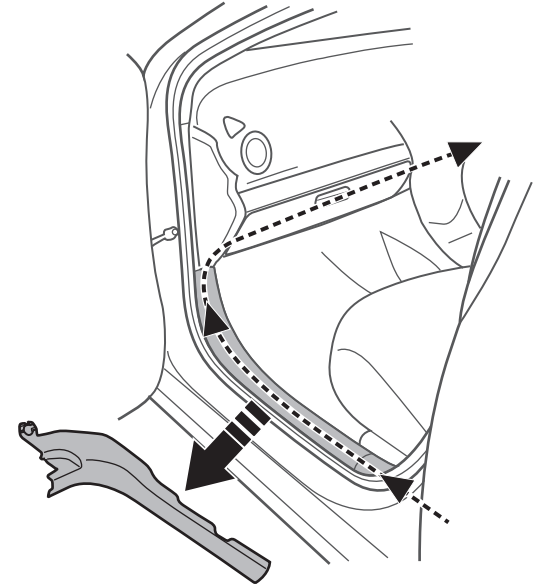


8

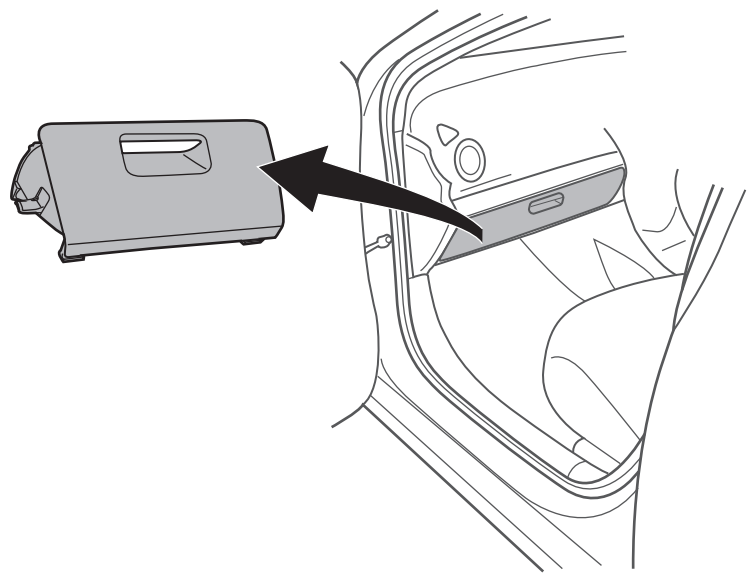
1



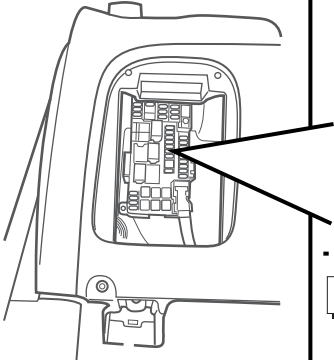
2



3

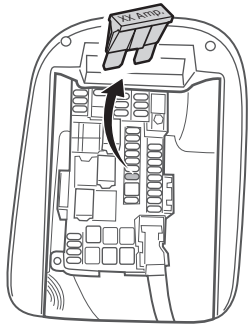


9

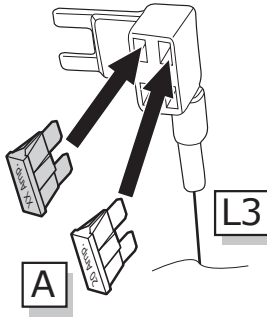


Option 1

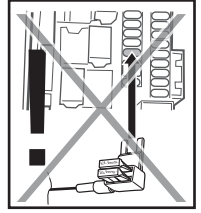
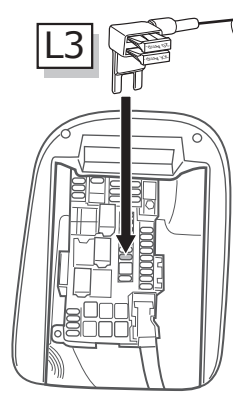
1



2

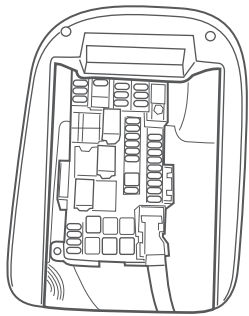


3

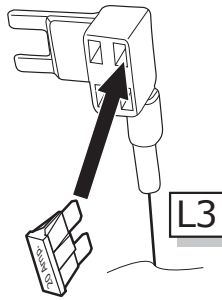


Option 2

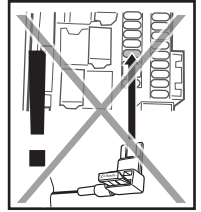
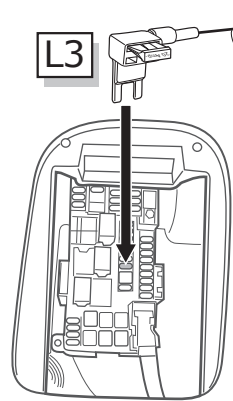
1



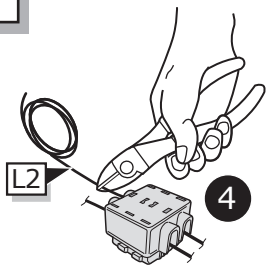
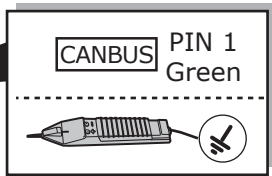
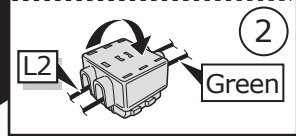
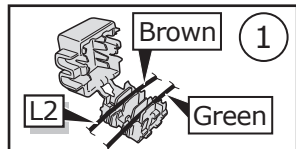
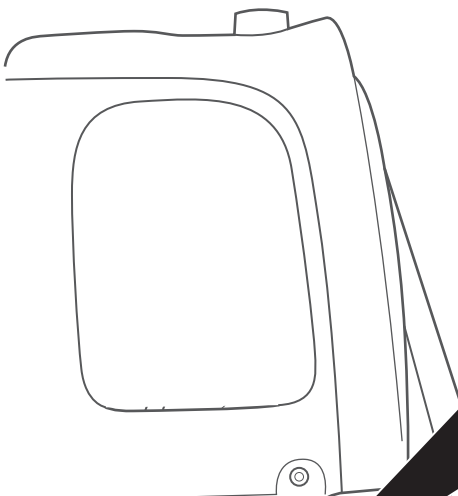
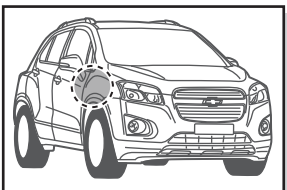
2



3



10

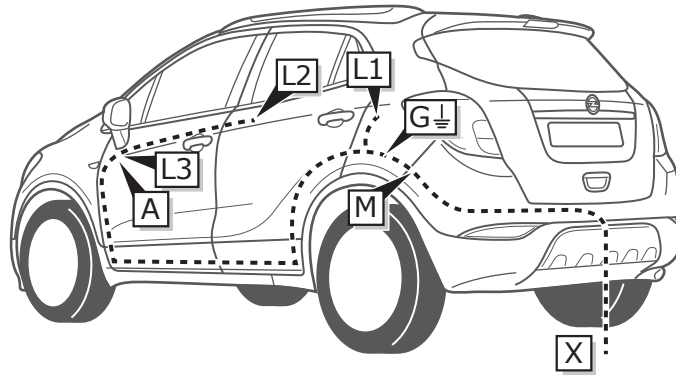


11



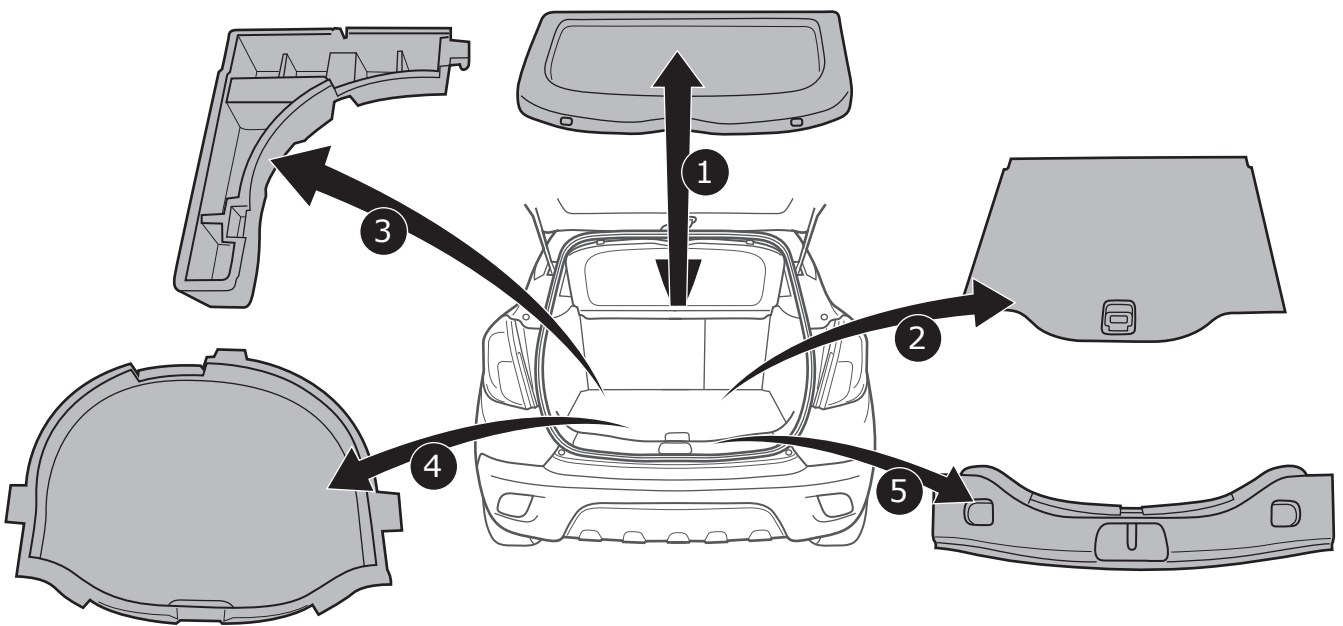
Pag. 36

INFO

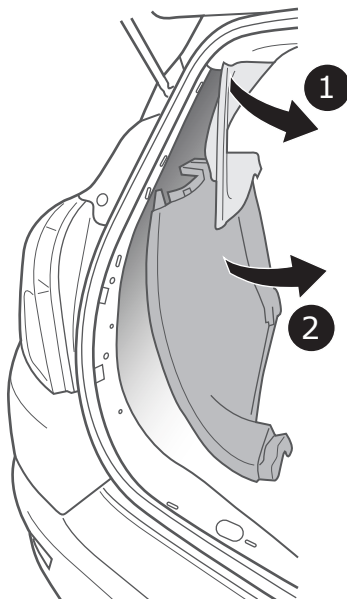


Mokka
Pag. 24
-
Pag. 30

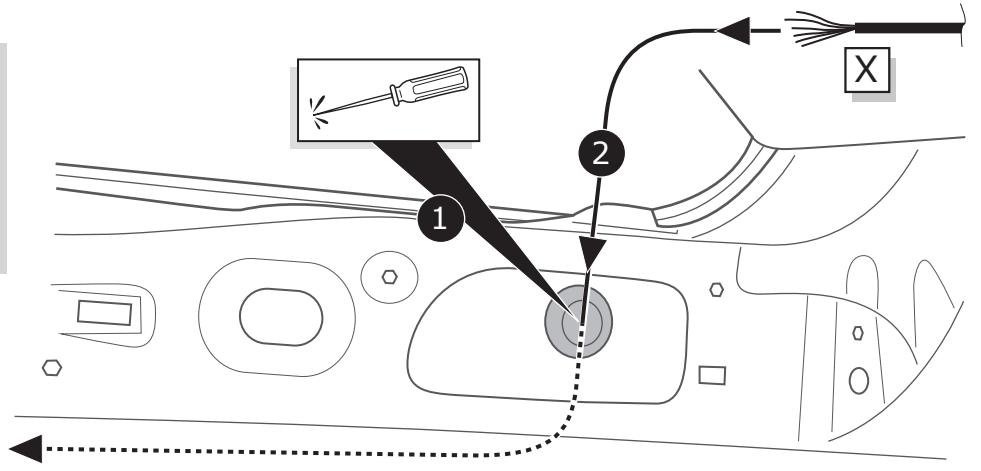
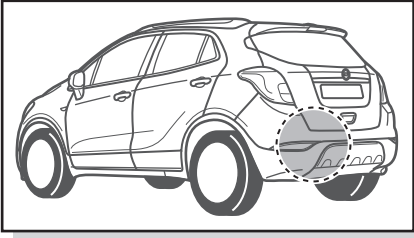
1



2



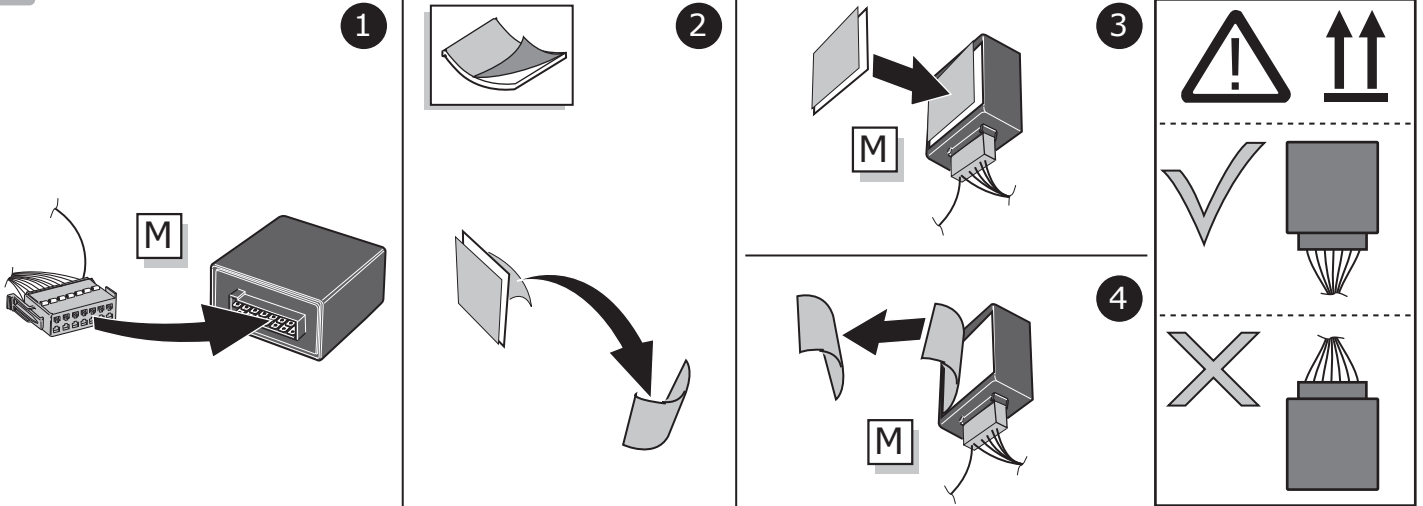
3



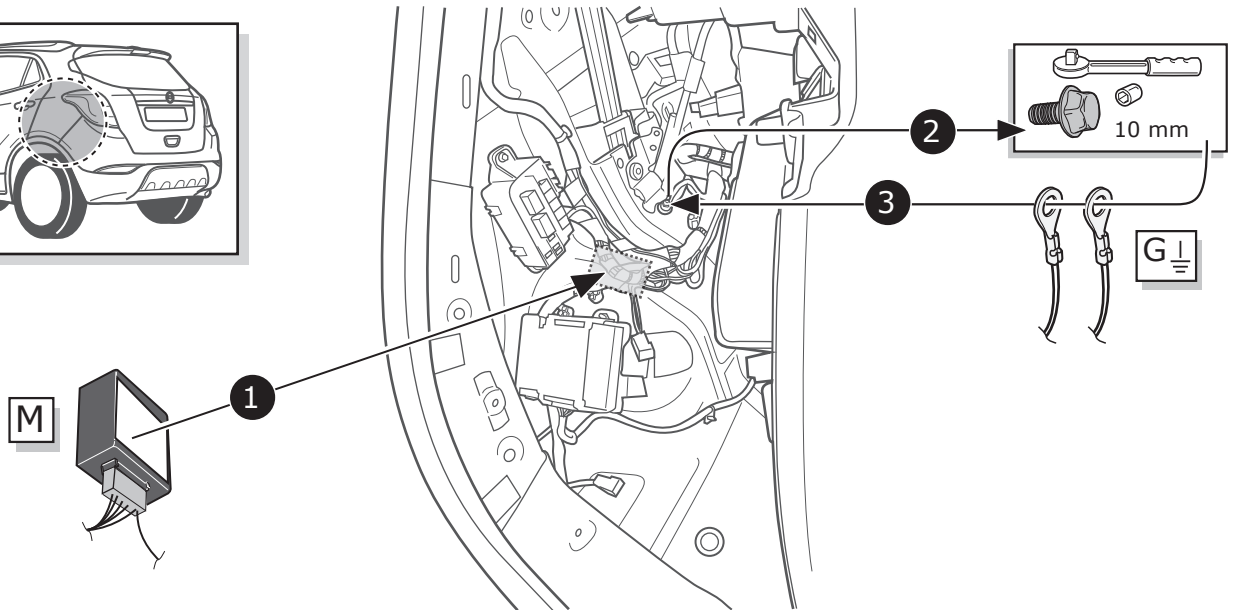
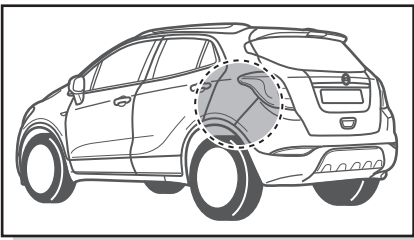
4

Pag. 35

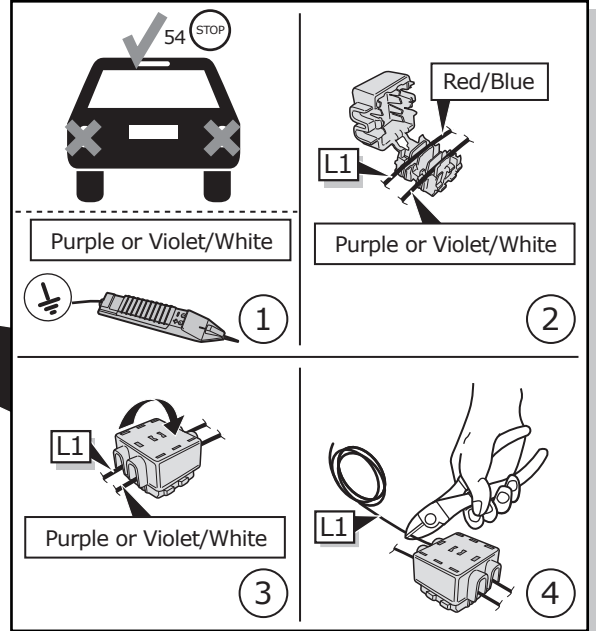
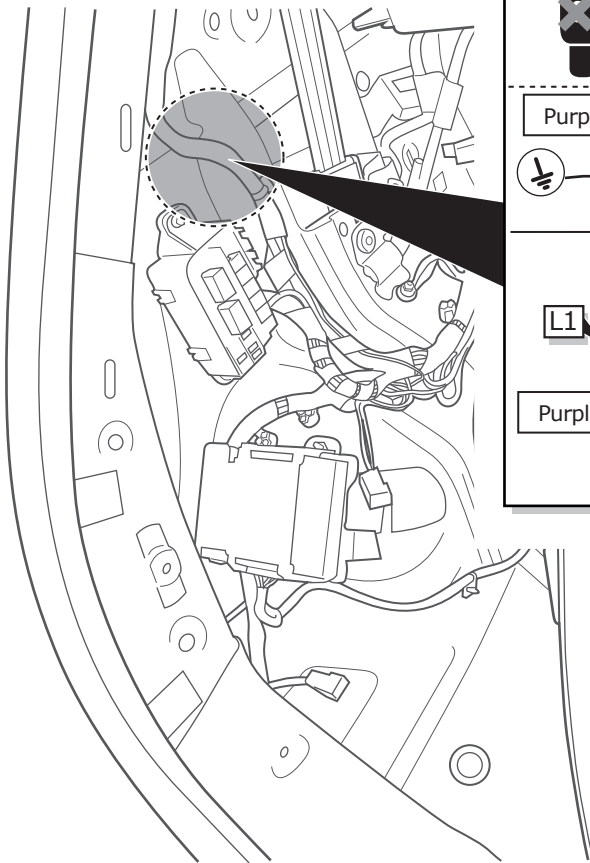
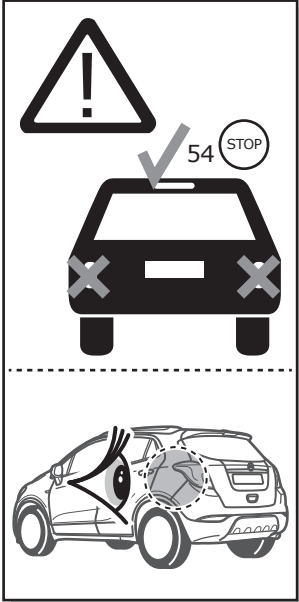
5



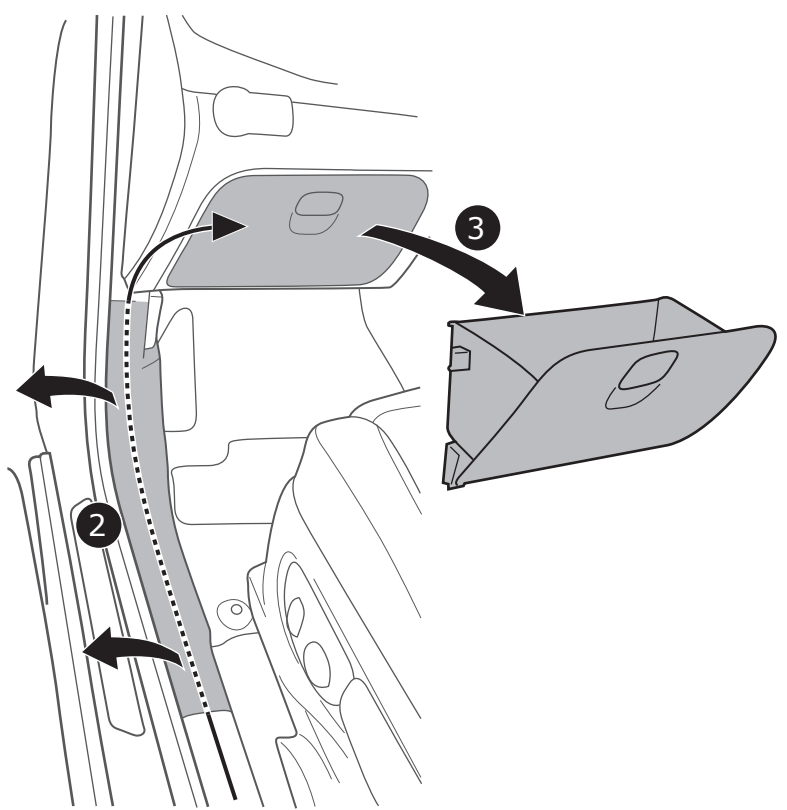
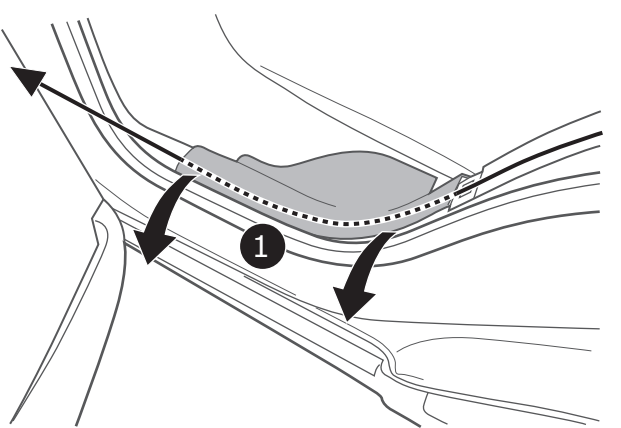
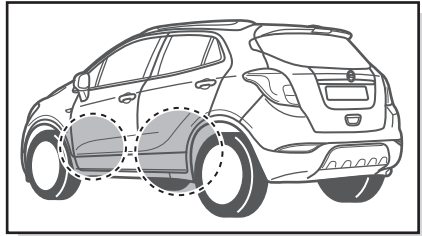
6



7



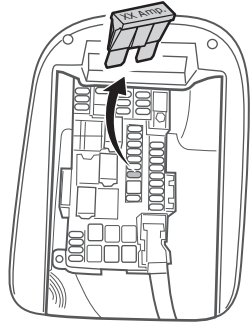
8



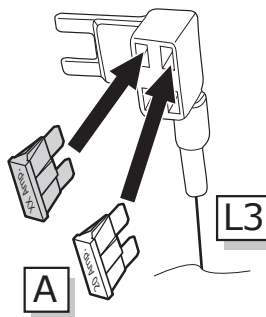
Opel Mokka

Option 1

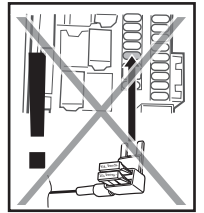
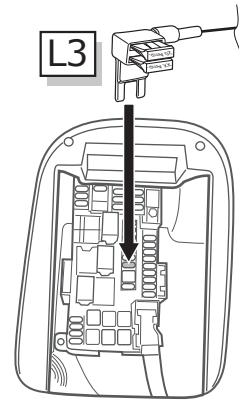
1



2

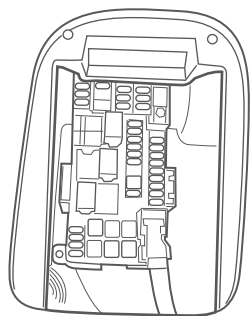


3

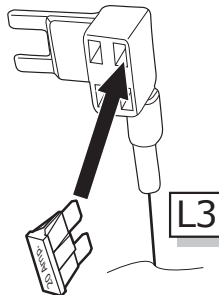


Option 2

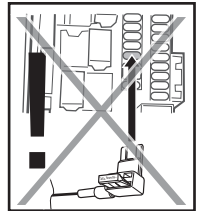
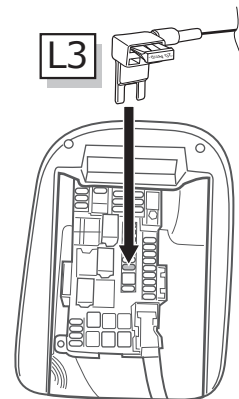
1



2



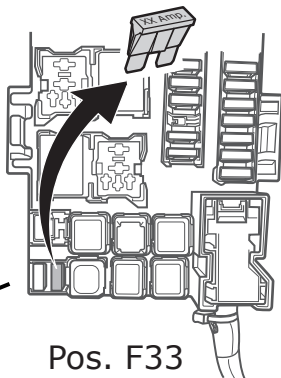
3



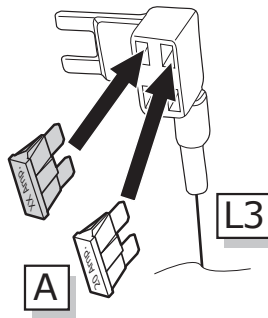
Opel Mokka X

Option 1

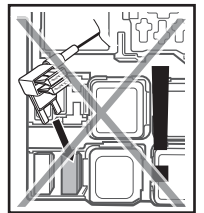
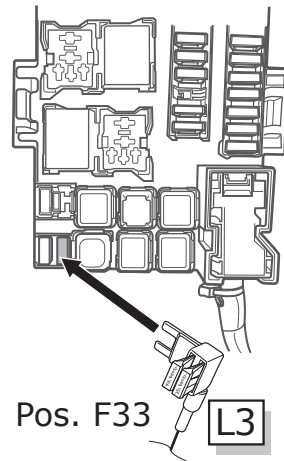
2



3

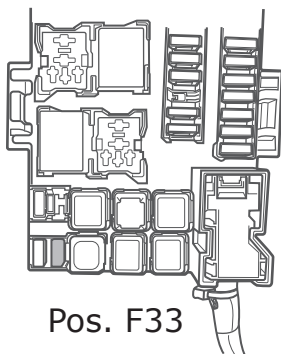


4

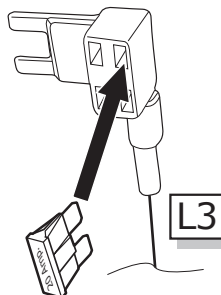


Option 2

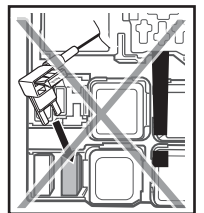
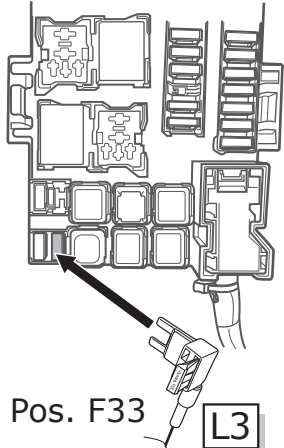
2



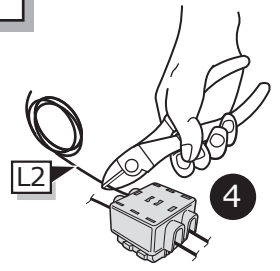
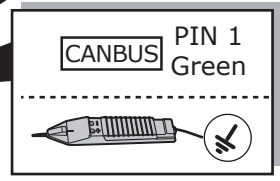
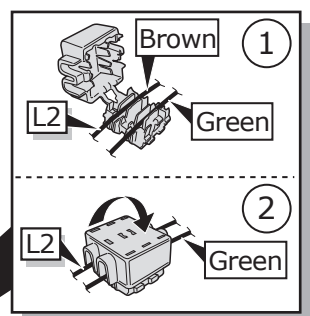
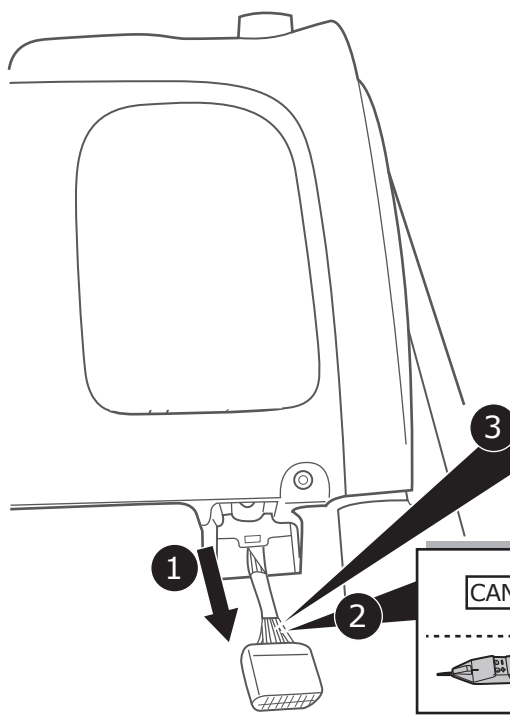
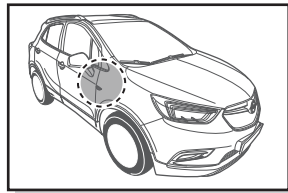
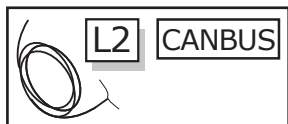
3



4



11

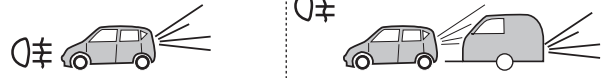
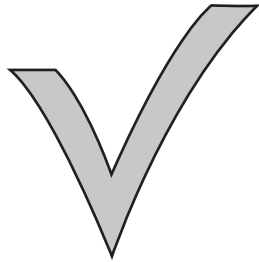
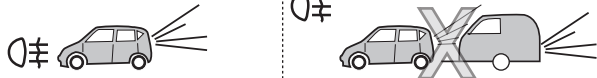


12



SP-140-ZZ

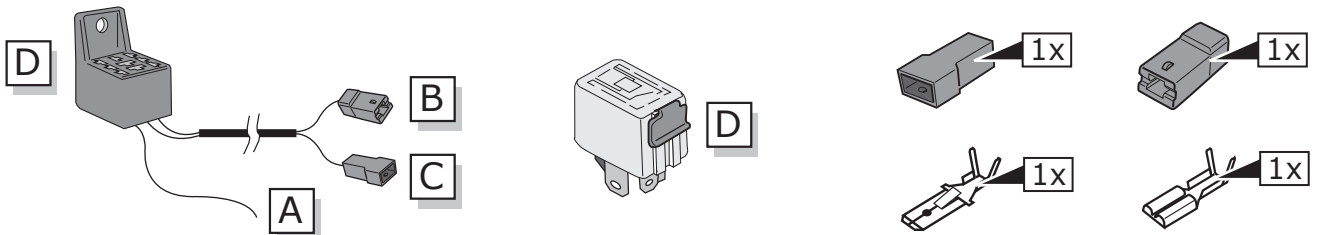
INFO



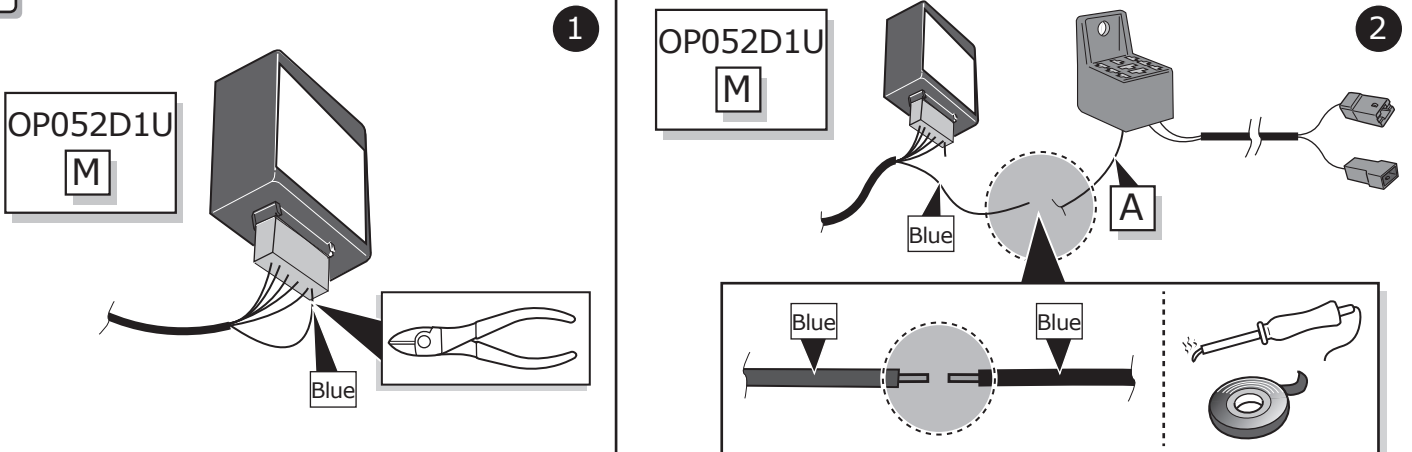
Supplier



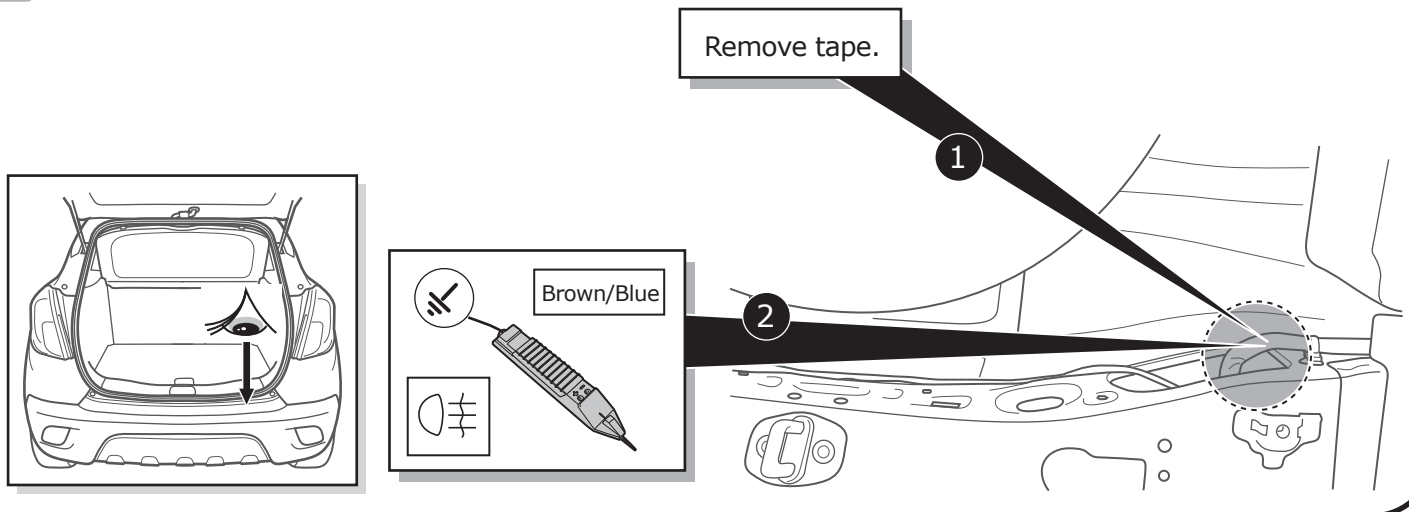
A



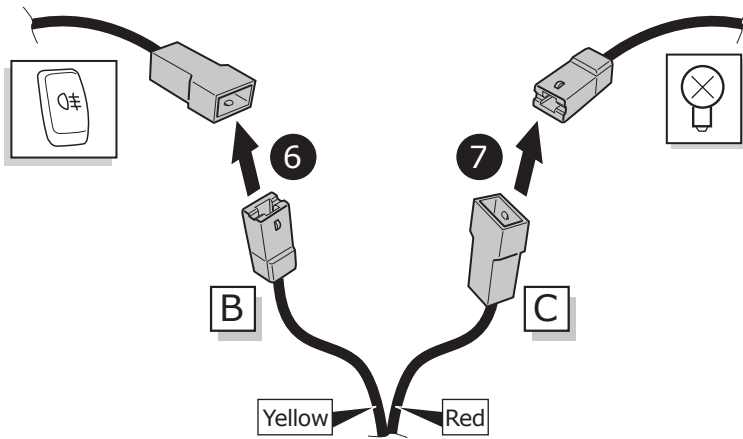
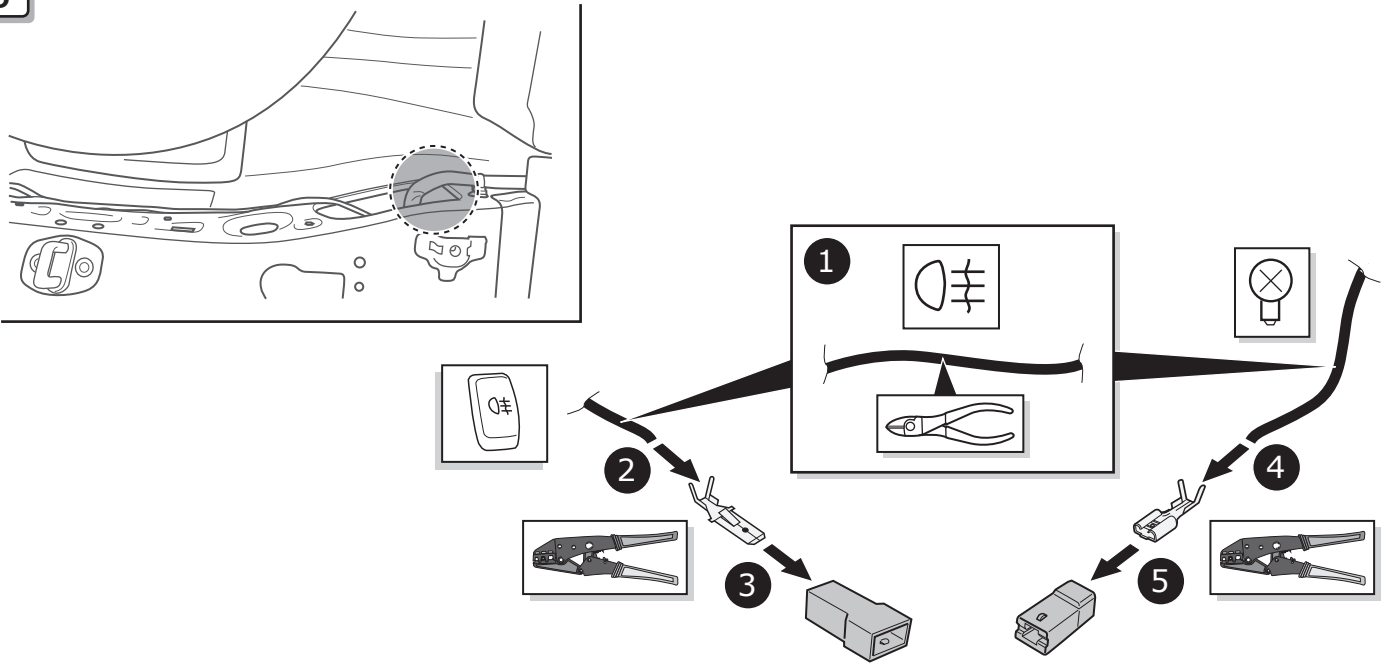
B



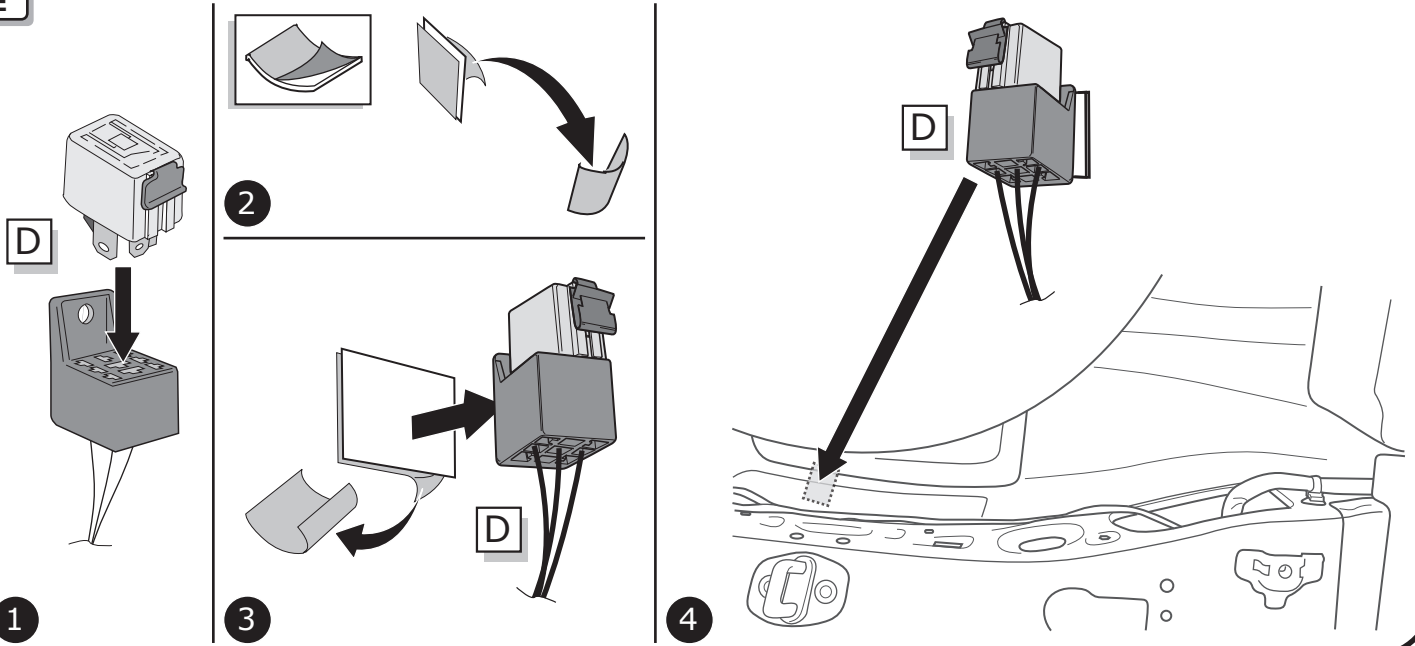
C



D



E

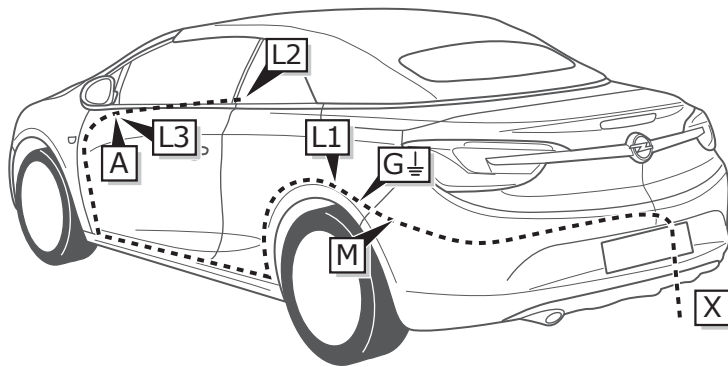


INFO

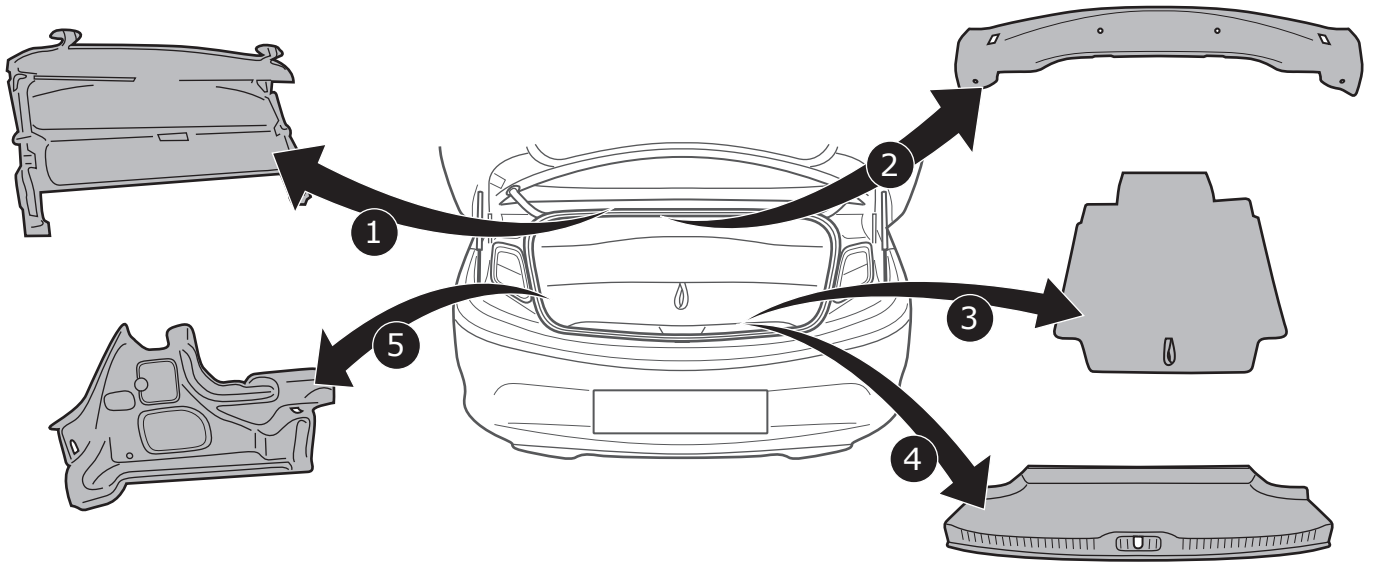
Cascada

Pag. 31

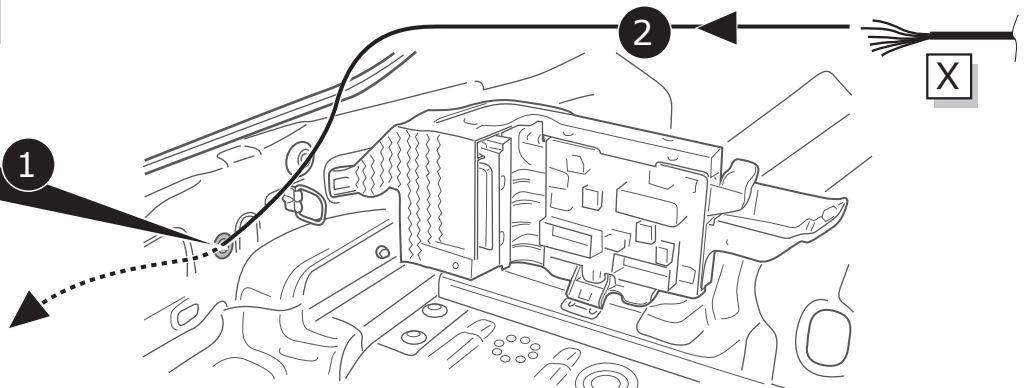
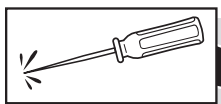
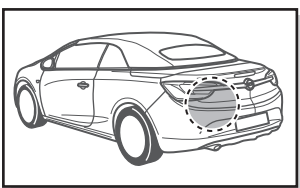
-
Pag. 34



1



2

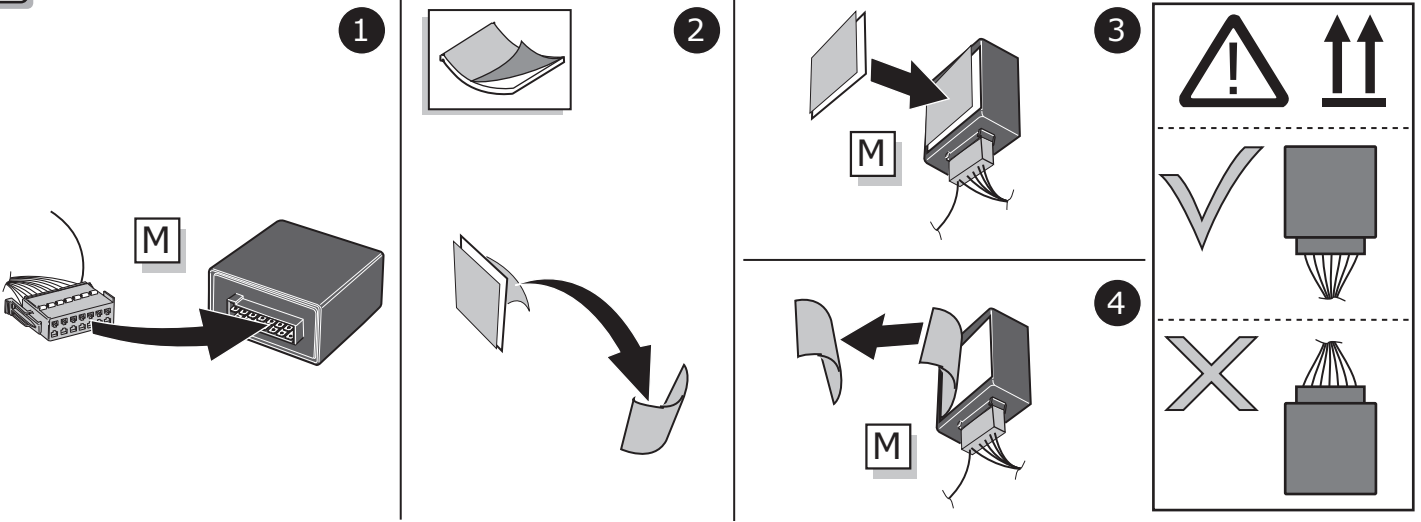


3

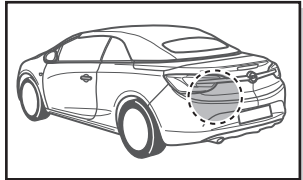
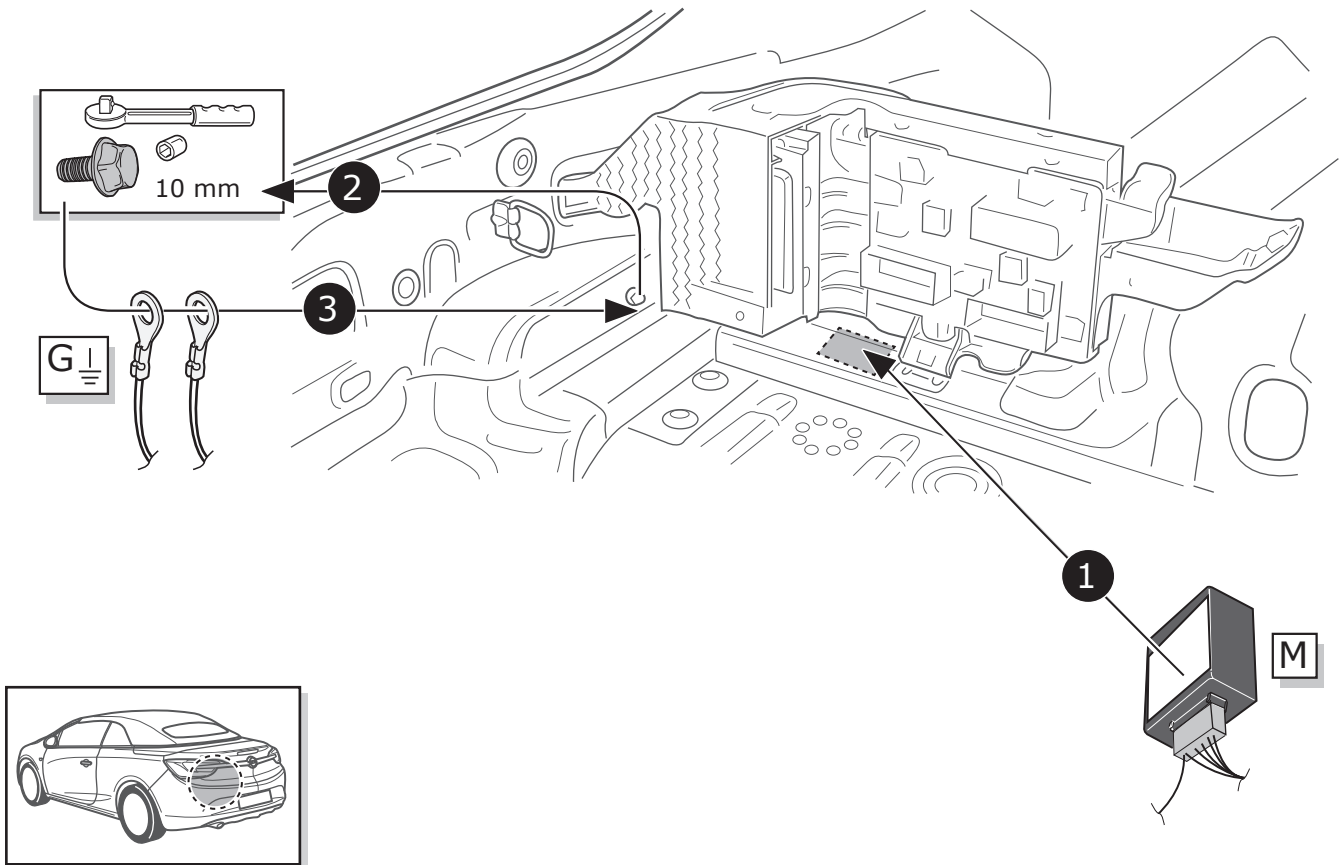


Pag. 35

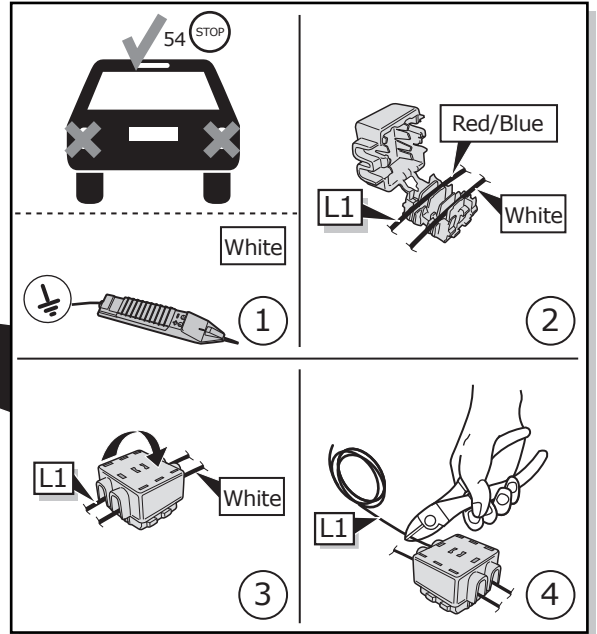
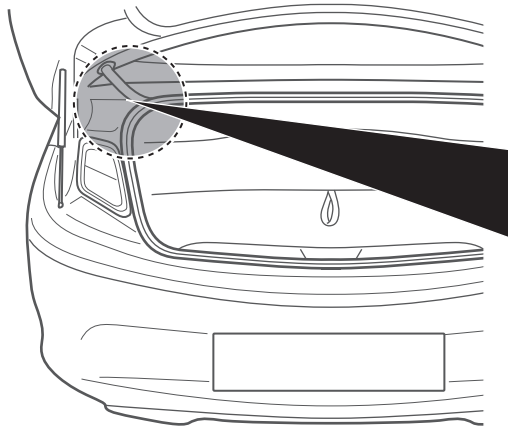
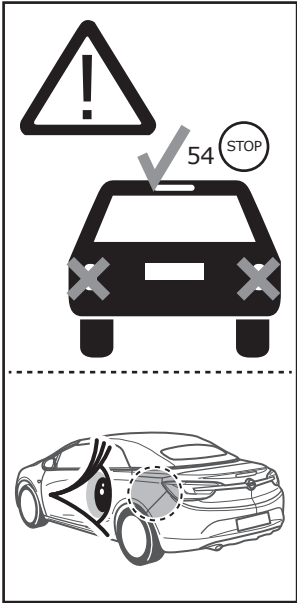
4



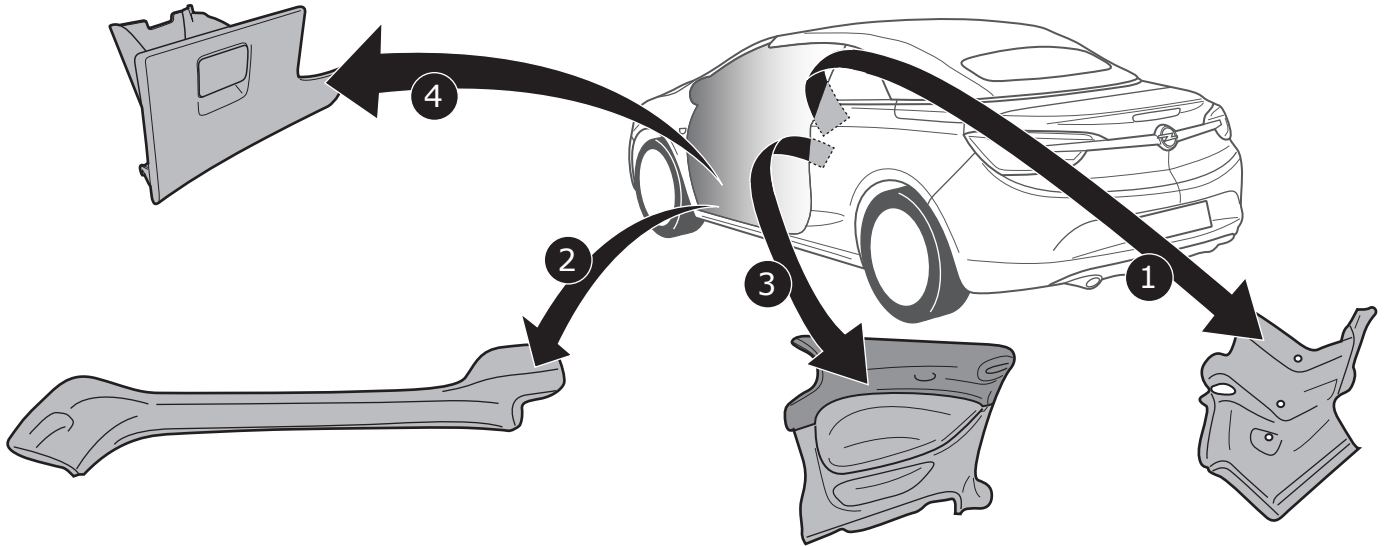
5



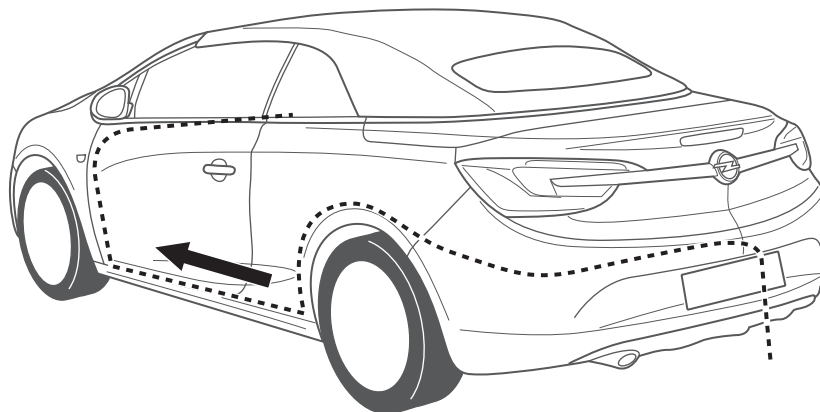
6



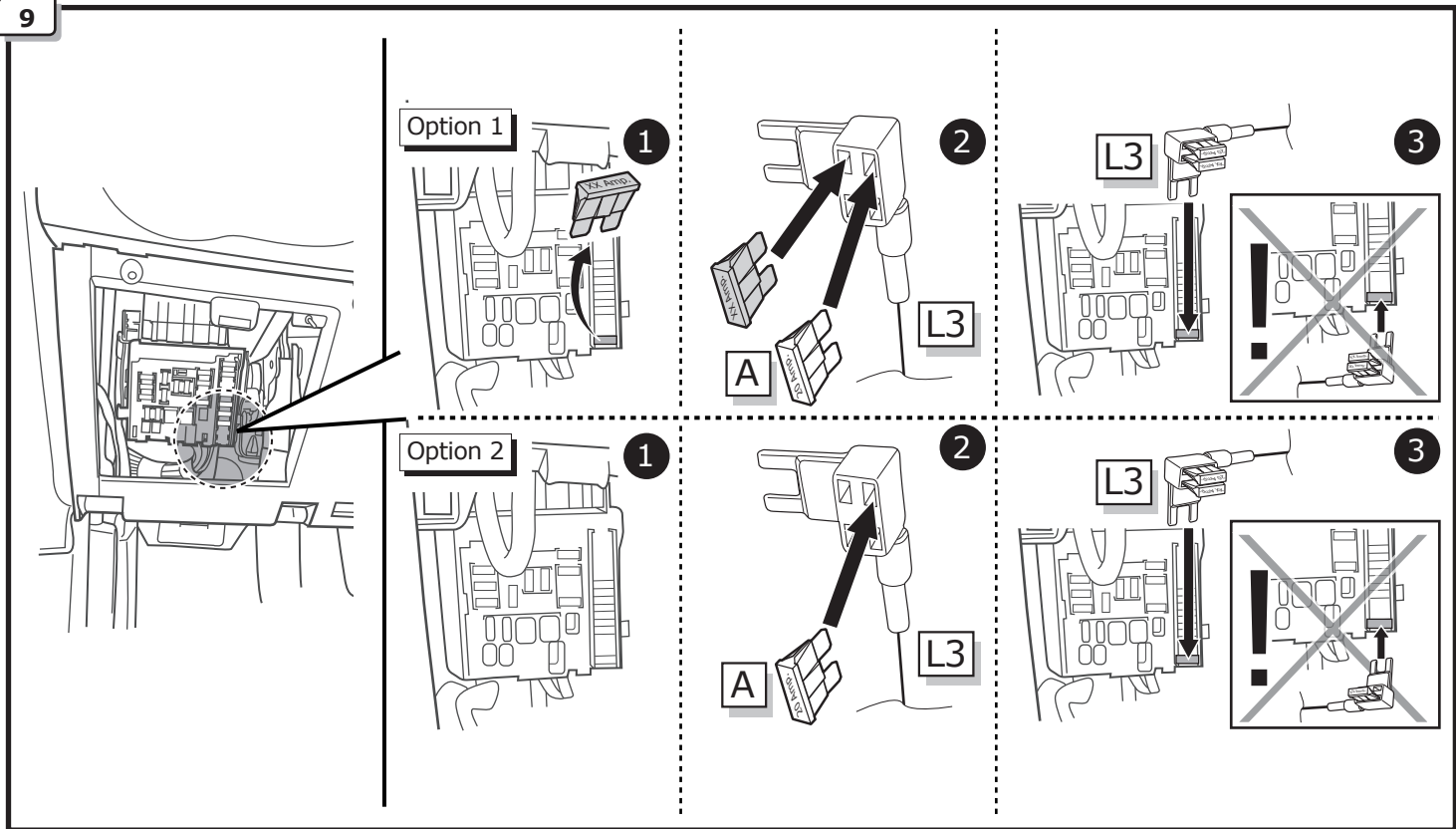
7



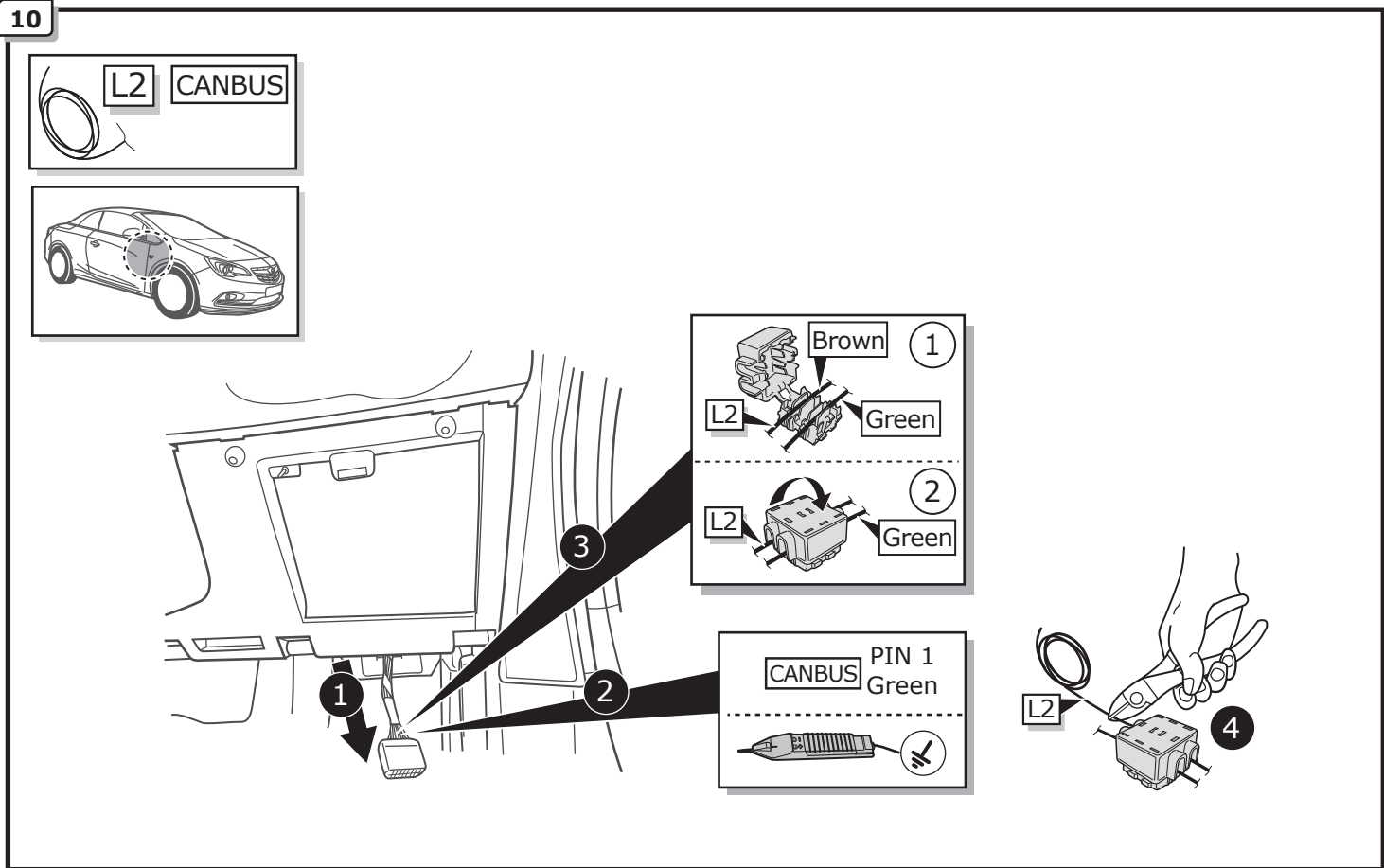
8



9



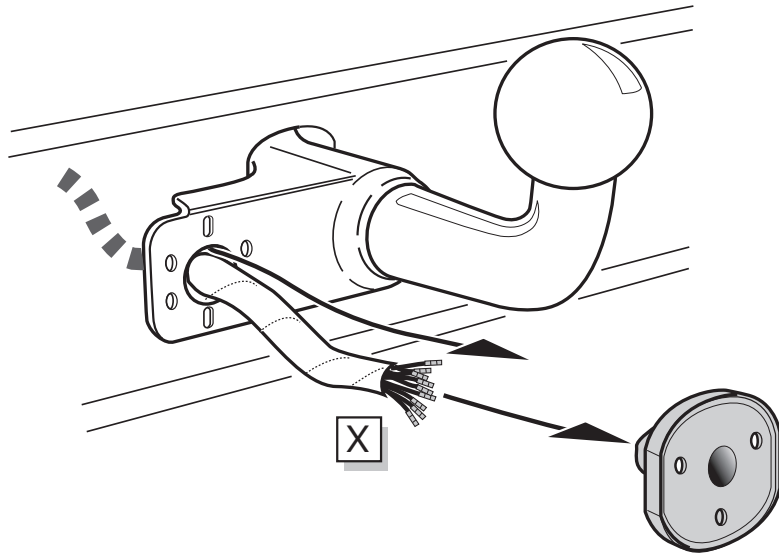
10



11



A

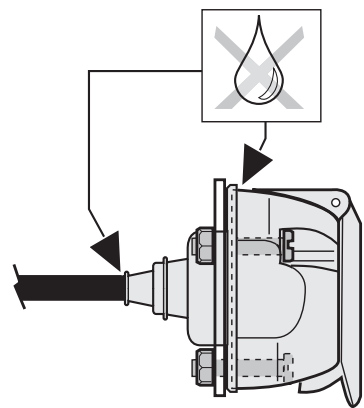
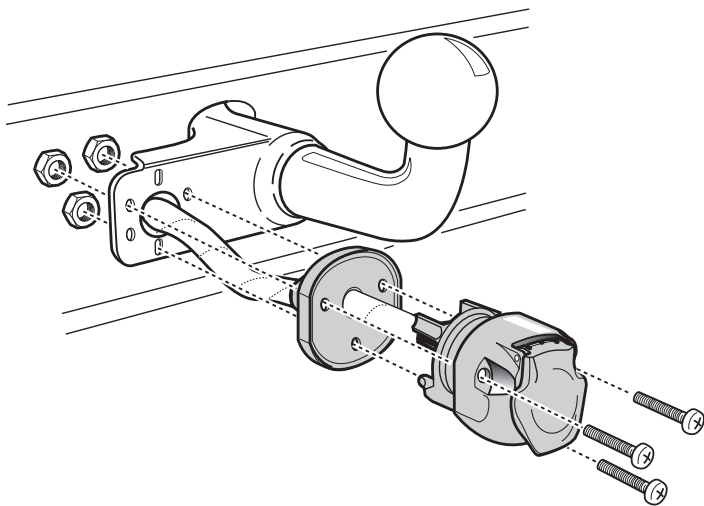


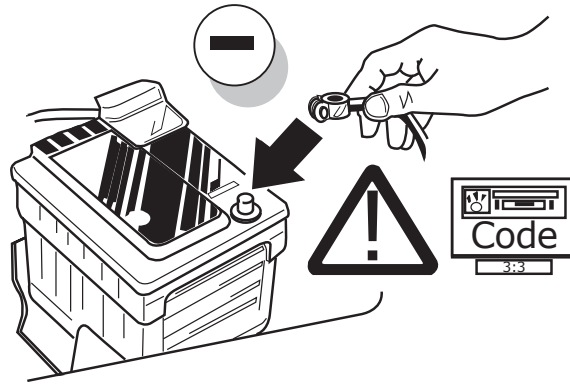
INFO

SOCKET CONNECTION 

Pag. 37

B



A**B**

Mokka

INFO

Pag. 29 - Pag. 30

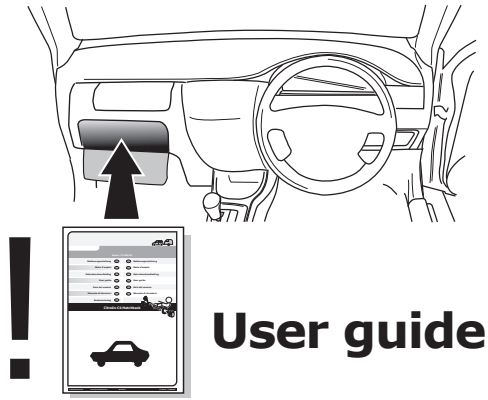
C

TEST ALL THE CIRCUITS WITH A TEST DEVICE WITH THE CORRECT POWER LOAD FOR EACH FUNCTION. A TEST DEVICE WITH LED'S CANNOT BE USED FOR THIS PURPOSE.

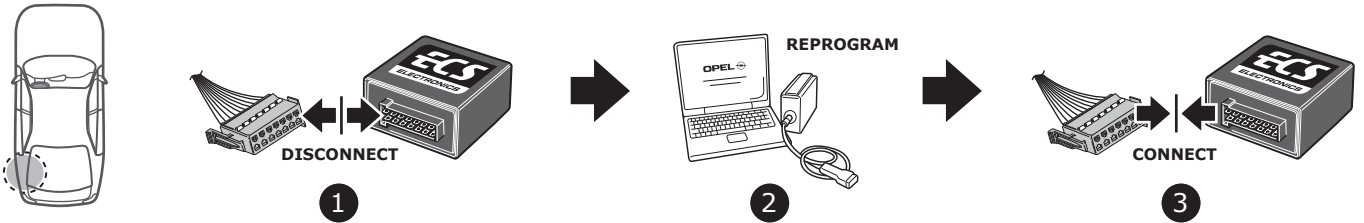
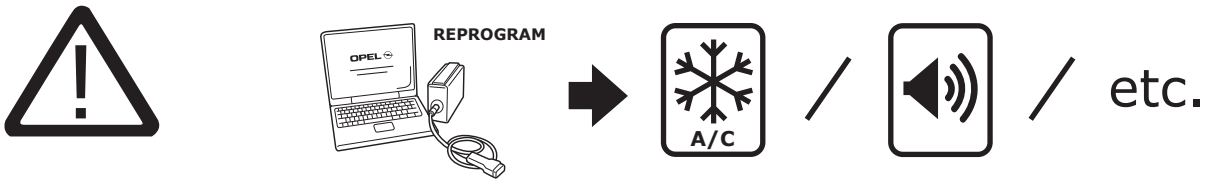
INFO

REINSTALL TRIM.

D



INFO



INFO

SOCKET CONNECTION

DIN/ISO 11446													
	1/L	2	3/31	4/R	5/58-R	6/54	7/58-L	8	9	10	11	12	13
Pmax	21W	21W		21W	42W	3x21W	42W	21W	180W/15Amp	180W/15Amp			
Colour	Yellow	Blue	White	Green	Brown	Red 1,00 mm ²	Black	Black/ Red	Brown/ White	Red 2,50 mm ²	White	-	White